

# КАТАЛОГ

По вопросам продаж и поддержки обращайтесь:

Алматы (7273)495-231  
Ангарск (3955)60-70-56  
Архангельск (8182)63-90-72  
Астрахань (8512)99-46-04  
Барнаул (3852)73-04-60  
Белгород (4722)40-23-64  
Благовещенск (4162)22-76-07  
Брянск (4832)59-03-52  
Владивосток (423)249-28-31  
Владикавказ (8672)28-90-48  
Владимир (4922)49-43-18  
Волгоград (844)278-03-48  
Вологда (8172)26-4159  
Воронеж (473)204-51-73  
Екатеринбург (343)384-55-89  
Иваново (4932)77-34-06  
Ижевск (3412)26-03-58  
Иркутск (395)279-98-46  
Казань (843)206-01-48

Калининград (4012)72-03-81  
Калуга (4842)92-23-67  
Кемерово (3842)65-04-62  
Киров (8332)68-02-04  
Коломна (4966)23-41-49  
Кострома (4942)77-07-48  
Краснодар (861)203-40-90  
Красноярск (391)204-63-61  
Курск (4712)77-13-04  
Курган (3522)50-90-47  
Липецк (4742)52-20-81  
Магнитогорск (3519)55-03-13  
Москва (495)268-04-70  
Мурманск (8152)59-64-93  
Набережные Челны (8552)20-53-41  
Нижний Новгород (831)429-08-12  
Новокузнецк (3843)20-46-81  
Ноябрьск (3496)41-32-12  
Новосибирск (383)227-86-73

Омск (3812)21-46-40  
Орел (4862)44-53-42  
Оренбург (3532)37-68-04  
Пенза (8412)22-31-16  
Петрозаводск (8142)55-98-37  
Псков (8112)59-10-37  
Пермь (342)205-81-47  
Ростов-на-Дону (863)308-18-15  
Рязань (4912)46-61-64  
Самара (846)206-03-16  
Саранск (8342)22-96-24  
Санкт-Петербург (812)309-46-40  
Саратов (845)249-38-78  
Севастополь (8692)22-31-93  
Симферополь (3652)67-13-56  
Смоленск (4812)29-41-54  
Сочи (862)225-72-31  
Ставрополь (8652)20-65-13  
Сургут (3462)77-98-35

Сыктывкар (8212)25-95-17  
Тамбов (4752)50-40-97  
Тверь (4822)63-31-35  
Тольятти (8482)63-91-07  
Томск (3822)98-41-53  
Тула (4872)33-79-87  
Тюмень (3452)66-21-18  
Ульяновск (8422)24-23-59  
Улан-Удэ (3012)59-97-51  
Уфа (347)229-48-12  
Хабаровск (4212)92-98-04  
Чебоксары (8352)28-53-07  
Челябинск (351)202-03-61  
Череповец (8202)49-02-64  
Чита (3022)38-34-83  
Якутск (4112)23-90-97  
Ярославль (4852)69-52-93

Россия +7(495)268-04-70

Казахстан +7(7172)727-132

Киргизия +996(312)96-26-47

Адрес: <https://walmec.nt-rt.ru/> || эл. почта: [wce@nt-rt.ru](mailto:wce@nt-rt.ru)

# GENESI CARBONIO 360 EVO HALO BASE

## FIELD OF APPLICATION: SOLVENT AND WATERBORNE BASE COAT

HALO (High Atomization Low Overspray) by Walcom®, more than 20 years of experience with the most popular technology in the market, the paint system that combines adequate atomizing pressure and high transferred efficiency, certified by international independent laboratory and research institutes.

The B series air caps developed in collaboration with the paint companies, the 12-hole nozzle with diffuser and flexibility in the product and fan adjustment make it a real jewel in the application of the latest generation paint products.

GENESI CARBONIO 360 EVO HALO BASE is an excellent professional tool and these are some of the features:

- high atomization and product lay out,
- low air consumption 350 l/min at 2 bar / 12 cfm at 29 psi,
- compliant max 2 bar / 29 psi,
- certified transfer efficiency over 70%,
- integrated pressure regulator, with spray gun air inlet adjustment knob,
- quick connect/release digital pressure gauge,
- nozzle with special diffuser for air flow homogeneity,
- easy to adjust and versatility,
- carbon fiber for lightness and ergonomic design,
- excellent color match, certified by main paint companies,
- resistant to solvent and pickling chemicals,
- 340 g weight, the lightest on the market.

**Walcom®**  
SPRAY GUN EVOLUTION

CE Ex II 2G X



MADE IN ITALY



## TECHNICAL DATA

Body: forged aluminum and carbon fiber

Handle and trigger: carbon fiber

Air cap: anodized aluminum

Air cap ring: carbon fiber

Nozzle: stainless steel AISI 303

Needle-springs: stainless steel AISI 303

Seal gaskets: self-lubricating PTFE (teflon)

Weight: 340 g

Operating air pressure: range 0.5 - 2.5 bar (7.2 - 36 psi) / compliant max 2 bar (29 psi)

Air consumption: 350 l/min at 2 bar / 12 cfm at 29 psi

Ø nozzle: 1.0 - 1.1 - 1.2 - 1.3 - 1.4 - 1.7 - 1.9

## GENESI CARBONIO 360 EVO HALO BASE

ITEM ID	COMPOSITION	PACKAGING	Recommended use
W0230**	Cup POM C 680 cc + Integrated pressure regulator and carbon fiber quick release/connection digital pressure gauge.	■	BASE COAT
W0235**	Cup aluminum 750 cc + Integrated pressure regulator and carbon fiber quick release/connection digital pressure gauge.	■	BASE COAT
W0220**	Cup POM C 680 cc Integrated pressure regulator NO pressure gauge	■	
W0225**	Cup aluminum 750 cc Integrated pressure regulator NO pressure gauge	■	
W0265**	Spray gun only + Integrated pressure regulator and carbon fiber quick release/connection digital pressure gauge.	■	

Note:  
add nozzle Ø to ITEM ID (\*\*)

# GENESI CARBONIO 360 EVO HALO CLEAR

## FIELD OF APPLICATION: CLEAR COAT APPLICATION MS-HS UHS ACRYLICS

To offer greater efficiency and quality of coating, we have studied a specific version for clear.

HALO (High Atomization Low Overspray) CLEAR is equipped with a high atomization cap C, the new MP air cap is instead specific for the "mirror effect" of the clear, eliminating any form of orange peel.

The flexibility of the product adjustment allows the operator to find the right feeling in using this spray gun, to better enhance its incredible qualities.

GENESI CARBONIO 360 EVO HALO CLEAR is an excellent professional tool and these are some of the features:

- high atomization and product lay out,
- low air consumption 380 l/min at 2 bar / 13 cfm at 29 psi,
- compliant max 2 bar / 29 psi,
- certified transfer efficiency over 70%,
- integrated pressure regulator, with spray gun air inlet adjustment knob,
- quick connect/release digital pressure gauge,
- nozzle with special diffuser for air flow homogeneity,
- easy to adjust and versatility,
- carbon fiber for lightness and ergonomic design,
- excellent color match, certified by main paint companies,
- resistant to solvent and pickling chemicals,
- 340 g weight, the lightest on the market.

**Walcom®**  
SPRAY GUN EVOLUTION

CE Ex II 2G X



MADE IN ITALY



MP Air cap  
(add to ITEM ID /CMP)

## TECHNICAL DATA

Body: forged aluminum and carbon fiber

Handle and trigger: carbon fiber

Air cap: anodized aluminum

Air cap ring: carbon fiber

Nozzle: stainless steel AISI 303

Needle-springs: stainless steel AISI 303

Seal gaskets: self-lubricating PTFE (teflon)

Weight: 340 g

Operating air pressure: range 0.5 - 2.5 bar (7.2 - 36 psi) / compliant max 2 bar (29 psi)

Air consumption: 380 l/min at 2 bar / 13 cfm at 29 psi

Ø nozzle: 1.0 - 1.1 - 1.2 - 1.3 - 1.4 - 1.7 - 1.9

## GENESI CARBONIO 360 EVO HALO CLEAR

ITEM ID	COMPOSITION	PACKAGING	Recommended use
W0130**	Cup POM C 680 cc + Integrated pressure regulator and carbon fiber quick release/connection digital pressure gauge.	■	
W0135**	Cup aluminum 750 cc + Integrated pressure regulator and carbon fiber quick release/connection digital pressure gauge.	■	CLEAR COAT
W0120**	Cup POM C 680 cc Integrated pressure regulator NO pressure gauge	■	
W0125**	Cup aluminum 750 cc Integrated pressure regulator NO pressure gauge	■	
W0165**	Spray gun only + Integrated pressure regulator and carbon fiber quick release/connection digital pressure gauge.	■	

Note:  
add nozzle Ø to ITEM ID (\*\*)

# GENESI CARBONIO 360 EVO HVLP

## FIELD OF APPLICATION: SOLVENT AND WATERBORNE BASE COATS

It's a perfect tool for waterborne base coats application and solvent based, color match master, air cap pressure 0.7 bar (10 psi) for a traditional HVLP as from California norm n. 1551 SCAQMD and more then 65% efficiency transfer rate.

It's very low in air consumption, 360 l/min / 12 cfm, equal to LV (low volume) technology consequently saving air and energy.

GENESI CARBONIO 360 EVO HVLP is an excellent professional tool and these are some of the features:

- high atomization and product lay out for base coats,
- low air consumption 360 l/min a 2 bar / 12 cfm at 29 psi : LV Technology,
- HVLP max 2 bar / 29 psi,
- certified transfer efficiency over 70%,
- integrated pressure regulator, with spray gun air inlet adjustment knob,
- quick connect/release digital pressure gauge,
- nozzle with special diffuser for airflow homogeneity,
- easy to adjust and versatility,
- carbon fiber for lightness and ergonomic design,
- excellent color match, certified by main paint companies,
- resistant to solvent and pickling chemicals,
- 340 g weight, the lightest on the market.



**Walcom®**  
SPRAY GUN EVOLUTION

CE Ex II 2G X



MADE IN ITALY

## TECHNICAL DATA

Body: forged aluminum and carbon fiber

Handle and trigger: carbon fiber

Air cap: anodized aluminum

Air cap ring: carbon fiber

Nozzle: stainless steel AISI 303

Needle-springs: stainless steel AISI 303

Seal gaskets: self-lubricating PTFE (teflon)





Weight: 340 g

Operating air pressure: range 0.5 - 2.5 bar (7.2 - 36 psi) / HVLP max 2 bar (29 psi)

Air consumption: 360 l/min at 2 bar / 12 cfm at 29 psi

Ø ugello: 1.1 - 1.2 - 1.3 - 1.4 - 1.5 - 1.7 - 1.9

## GENESI CARBONIO 360 EVO HVLP

ITEM ID	COMPOSITION	PACKAGING	Recommended use
W0330**	Cup POM C 680 cc + Integrated pressure regulator and carbon fiber quick release/connection digital pressure gauge.	■	
W0335**	Cup aluminum 750 cc + Integrated pressure regulator and carbon fiber quick release/connection digital pressure gauge.	■	 BASE COAT
W0320**	Cup POM C 680 cc Integrated pressure regulator NO pressure gauge	■	
W0325**	Cup aluminum 750 cc Integrated pressure regulator NO pressure gauge	■	
W0365**	Spray gun only + Integrated pressure regulator and carbon fiber quick release/connection digital pressure gauge.	■	 

Note:  
add nozzle Ø to ITEM ID (\*\*)

# GENESI CARBONIO 360 EVO GEO

## FIELD OF APPLICATION: WATERBORNE BASE AND SOLVENT CLEAR COAT

One of the masterpiece of the Walcom® brand, the GEO dual atomization system, hvlp in respect to the California norm n. 1151 SCAQMD with 0.7 bar at the air cap and more then 65% transfer efficiency, perfect for color match. The dual atomizing nozzle, 6 pre-atomizing holes, excellent product lay out, unique system that delivers incredible performance.

It's very low in air consumption 425 l/min / 15 cfm, saving air and consequently energy.

GENESI CARBONIO 360 EVO GEO is an excellent professional tool and these are some of the features:

- high atomization and product lay out for base coats,
- low air consumption 425 l/min at 2 bar / 15 cfm at 29 psi: LV technology,
- HVLP max 2 bar / 29 psi,
- certified transfer efficiency over 70%,
- integrated pressure regulator, with spray gun air inlet adjustment knob,
- quick connect/release digital pressure gauge,
- nozzle with special diffuser for airflow homogeneity,
- easy to adjust and versatility,
- carbon fiber for lightness and ergonomic design,
- excellent color match, certified by main paint companies,
- resistant to solvent and pickling chemicals,
- 340 g weight, the lightest on the market.

**Walcom®**  
SPRAY GUN EVOLUTION

CE Ex II 2G X



MADE IN ITALY

## TECHNICAL DATA

Body: forged aluminum and carbon fiber

Handle and trigger: carbon fiber

Air cap: anodized aluminum

Air cap ring: carbon fiber

GEO nozzle: stainless steel AISI 303

Needle-springs: stainless steel AISI 303

Seal gaskets: self-lubricating PTFE (teflon)

Weight: 340 g

Operating air pressure: range 0.5 - 2.5 bar (7.2 - 36 psi) / HVLP max 2 bar (29 psi)

Air consumption: 425 l/min at 2 bar / 15 cfm at 29 psi

Ø ugello: 1.0 - 1.1 - 1.2 - 1.3 - 1.4 - 1.5 - 1.7 - 1.9

## GENESI CARBONIO 360 EVO GEO

ITEM ID	COMPOSITION	PACKAGING	Recommended use
W0430**	Cup POM C 680 cc + Integrated pressure regulator and carbon fiber quick release/connection digital pressure gauge.	■	BASE COAT
W0435**	Cup aluminum 750 cc + Integrated pressure regulator and carbon fiber quick release/connection digital pressure gauge.	■	BASE COAT
W0420**	Cup POM C 680 cc Integrated pressure regulator NO pressure gauge	■	
W0425**	Cup aluminum 750 cc Integrated pressure regulator NO pressure gauge	■	
W0465**	Spray gun only + Integrated pressure regulator and carbon fiber quick release/connection digital pressure gauge.	■	

Note:  
add nozzle Ø to ITEM ID (\*\*)

# GENESI ALLUMINIO HALO BASE - HALO CLEAR - HVLP - GEO

## FIELD OF APPLICATION: WATER AND SOLVENT BASE MS-HS, UHS AND ACRYLIC CLEARS

The performance level of the GENESI line in the traditional anodized ALUMINUM version.

Extremely light (only 415 g), easy to handle and ergonomic, it is an ecological spray gun and resistant to any solvent.

Easy to use and clean, it is available in the versions for base HALO (High Atomization Low Overspray) BASE - HVLP - GEO and for clear HALO (High Atomization Low Overspray) CLEAR.

GENESI ALLUMINIO is characterized by:

- high atomization and product distension,
- low air consumption 350 l/min at 2 bar / 12 cfm at 29 psi HALO version,
- low air consumption 380-415 l/min at 2 bar /13-14 cfm at 29 psi HVLP-GEO version,
- 2 bar (29 psi) compliant HALO version,
- HVLP at 2 bar (29 psi) HVLP-GEO version,
- certified transfer efficiency, above 70%,
- ease and precision in adjusting the air, product, fan,
- weight 415 g, the lightest aluminum spray gun on the market.

**Walcom®**  
SPRAY GUN EVOLUTION

CE Ex II 2G X



MADE IN ITALY

## TECHNICAL DATA

Body: anodized forged aluminum

Hat and ring: anodized aluminum

Nozzle: AISI 303 stainless steel

Needle-springs: AISI 303 stainless steel

Weight: 415 g

Operating pressure: HALO BASE/CLEAR= range 0.5 - 2 bar (7.2 - 29 psi) / compliant max 2 bar (29 psi),

HVLP/GEO= range 0.5 - 2 bar (7.2 - 29 psi) / HVLP max 2 bar (29 psi)

Air consumption: HALO= 350 l/min at 2 bar / 12 cfm at 29 psi,

HVLP-GEO= 380-415 l/min at 2 bar /13-14 cfm at 29 psi

Ø nozzle HALO BASE / CLEAR version: 1.0 - 1.1 - 1.2 - 1.3 - 1.4 - 1.7 - 1.9

Ø nozzle HVLP version: 1.1 - 1.2 - 1.3 - 1.4 - 1.5 - 1.7 - 1.9

Ø nozzle GEO version: 1.0 - 1.1 - 1.2 - 1.3 - 1.4 - 1.5 - 1.7 - 1.9

## GENESI ALLUMINIO HALO BASE - HALO CLEAR - HVLP - GEO

ITEM ID	COMPOSITION	PACKAGING	Recommended use
<b>W0630**</b> HALO BASE	Cup POM C 680 cc + AL air inlet pressure regulator with pressure gauge	■	<b>BASE COAT</b> <b>CLEAR COAT</b>
<b>W0635**</b> HALO BASE	Cup aluminum 750 cc + AL air inlet pressure regulator with pressure gauge	■	***
<b>W0530**</b> HALO CLEAR	Cup POM C 680 cc + AL air inlet pressure regulator with pressure gauge	■	***
<b>W0535**</b> HALO CLEAR	Cup aluminum 750 cc + AL air inlet pressure regulator with pressure gauge	■	***
<b>W0730**</b> HVLP	Cup POM C 680 cc + AL air inlet pressure regulator with pressure gauge	■	
<b>W0735**</b> HVLP	Cup aluminum 750 cc + AL air inlet pressure regulator with pressure gauge	■	
<b>W0830**</b> GEO	Cup POM C 680 cc + AL air inlet pressure regulator with pressure gauge	■	
<b>W0835**</b> GEO	Cup aluminum 750 cc + AL air inlet pressure regulator with pressure gauge	■	

Packaging



Note:  
add nozzle Ø to ITEM ID (\*\*)

# EGO CARBONIO 190 HALO - HVLP

## FIELD OF APPLICATION: SMART REPAIR AND GRAPHICS

The process of total renewal and innovation of the range was integrated into the EGO, a spray gun dedicated to the refinish and smart repairs body shop. Thus, EGO CARBONIO 190 was born, forged aluminum core, over-injection body carbon fiber body, available in HALO (High Atomization Low Overspray) and HVLP versions.

Attention to every small detail, very light, easy to handle and, above all, excellent performance, EGO CARBONIO stands out for its characteristics that make it unique:

- weight, only 190 grams,
- performance, thanks to the high-precision components machined on 5-axis CNC machining;
- atomization, with the new anodized "anticorrosive" aluminum cap, designed specifically for a targeted, fine and precise application;
- strength and durability, obtained thanks to the mix of materials such as stainless steel, aluminum, brass and carbon fiber treated with nanotechnological processes for easier cleaning, and a safe resistance to chemical aggression.

EGO CARBONIO 190 represents the most sophisticated, from a design and production point of view, at the same time, it's easier and more practical for the painter to use. A unique spray gun capable of a wide range of application of its kind, in line with the Walcom® philosophy, based on innovation and technology.




**Walcom®**  
SPRAY GUN EVOLUTION

CE Ex II 2G X



MADE IN ITALY

## EGO CARBONIO 190 HALO - HVLP

ITEM ID	COMPOSITION	PACKAGING	Recommended use
7030** HALO	Cup POM C 75/180 cc + Integrated pressure regulator and carbon fiber quick release/connection digital pressure gauge.	■	 
7035** HALO	Cup aluminum 125 cc + Integrated pressure regulator and carbon fiber quick release/connection digital pressure gauge.	■	
7130** HVLP	Cup POM C 75/180 cc + Integrated pressure regulator and carbon fiber quick release/connection digital pressure gauge.	■	
7135** HVLP	Cup aluminum 125 cc + Integrated pressure regulator and carbon fiber quick release/connection digital pressure gauge.	■	<b>Packaging</b> ■ 

Note:  
add nozzle Ø to ITEM ID (\*\*)

# SLIM KOMBAT HALO

## FIELD OF APPLICATION: PRIMERS, BASE COAT, CLEAR COAT AND INDUSTRIAL PAINTING

The revolutionary spray gun that breaks away from classic production schemes and features a MAGNESIUM body over-injected with KEVLAR® fiber (Pat. Pending).

The lightness of magnesium, combined with the compactness and resistance of Kevlar, give life to an spray gun weighing only 345 g, resistant to all types of solvents and strippers, with truly very high performance levels in terms of atomization, distension and product savings.

The HALO (High Atomization Low Overspray) version is ideal for base that require good atomization, wet-on-wet base, UV base, as well as for opaque and clear base thanks to the high quality level and reduced product consumption.

SLIM KOMBAT HALO is characterized by:

- excellent performance level,
- ideal for quality / UV / wet-on-wet primers,
- excellent for MS HS clear and base,
- compliant at 2 bar (29 psi),
- certified transfer efficiency greater than 70%,
- resistant to all types of solvents,
- very light, easy to handle and ergonomic.

**Walcom®**  
SPRAY GUN EVOLUTION

CE Ex II 2G X



MADE IN ITALY



## TECHNICAL DATA

Body: die-casting magnesium and Kevlar fiber

Trigger: Kevlar fiber

Air cap: anodized aluminum

Air cap ring: Kevlar fiber

Nozzle: AISI 303 stainless steel

Needle-spring: stainless steel

Seal gaskets: self-lubricating PTFE (teflon)

Weight: 345 g

Operating air pressure: range 0.5 - 2.5 bar (7.2 - 36 psi) / recommended at 2 bar (29 psi)

Air consumption: 265 l/min at 2 bar / 9 cfm at 29 psi

Ø nozzle **Gravity feed**: 1.0 - 1.1 - 1.2 - 1.3 - 1.4 - 1.5 - 1.7 - 1.8 - 1.9 - 2.2 - 2.5 **UV feed**: 1.1 - 1.2 - 1.3 - 1.4

Ø nozzle **Suction feed**: 1.3 - 1.4 - 1.5 - 1.7 - 1.8 - 1.9 - 2.2

Ø nozzle **Pressure feed**: 1.0 - 1.1 - 1.2 - 1.3 - 1.4 - 1.5 - 1.7 - 1.8 - 1.9 - 2.2

## SLIM KOMBAT HALO

ITEM ID	COMPOSITION	PACKAGING
8030**	Cup POM C 680 cc + Air inlet pressure regulator with pressure gauge	■
8030**UV	Cup POM C-UV 680 cc + Air inlet pressure regulator with pressure gauge	■
8035**	Cup aluminum 750 cc + Air inlet pressure regulator with pressure gauge	■
8020**	Cup POM C 680 cc SR ( without air flow regulator)	■
8025**	Cup aluminum 750 cc SR ( without air flow regulator)	■
8070**	Bayonet suction cup 1000 cc + Air inlet pressure regulator with pressure gauge	■
8072**	Bayonet suction cup 1000 cc SR ( without air flow regulator)	■
8080**	SP - M 1/4" + Air inlet pressure regulator with pressure gauge	■
8080**-3/8	SP - M 3/8" + Air inlet pressure regulator with pressure gauge	■
8081**	SP - M 1/4" SR ( without air flow regulator)	■
8081**-3/8	SP - M 3/8" SR ( without air flow regulator)	■
8060**	Spray gun only /	■

## Recommended use



BASE COAT  
CLEAR COAT  
PRIMER

## Packaging



Note:  
add nozzle Ø to ITEM ID (\*\*)



# SLIM KOMBAT HVLP

## FIELD OF APPLICATION: PRIMERS, BASE COAT, CLEAR COAT AND INDUSTRIAL PAINTING

The revolutionary spray gun that breaks away from classic production schemes and features a MAGNESIUM body over-injected with KEVLAR® fiber (Pat. Pending).

The lightness of magnesium, combined with the compactness and resistance of Kevlar, give life to an spray gun weighing only 345 g, resistant to all types of solvents and strippers, with truly very high performance levels in terms of atomization, distension and product savings.

The HVLP version is ideal for base that require good atomization, wet-on-wet base, UV base, as well as for base thanks to the high quality level and reduced product consumption.

SLIM KOMBAT HVLP is characterized by:

- excellent performance level,
- ideal for quality / UV / wet-on-wet primers,
- excellent for base,
- HVLP at 2 bar (29 psi),
- certified transfer efficiency greater than 70%,
- resistant to all types of solvents,
- very light, easy to handle and ergonomic.

**Walcom®**  
SPRAY GUN EVOLUTION

CE Ex II 2G X

Check the correct setup of the



MADE IN ITALY



## TECHNICAL DATA

Body: die-casting magnesium and Kevlar fiber

Trigger: Kevlar fiber

Air cap: anodized aluminum

Air cap ring: Kevlar fiber

Nozzle: AISI 303 stainless steel

Needle-spring: stainless steel

Seal gaskets: self-lubricating PTFE (teflon)

Weight: 345 g

Operating air pressure: range 0.5 - 2.5 bar (7.2 - 36 psi) / HVLP at 2 bar (29 psi)

Air consumption: 315 l/min at 2 bar / 11 cfm at 29 psi

Ø nozzle Gravity feed/ Pressure feed: 1.0 - 1.1 - 1.2 - 1.3 - 1.4 - 1.5 - 1.7 - 1.8 - 1.9 - 2.2 - 2.5 UV feed: 1.1 - 1.2 - 1.3 - 1.4

Ø nozzle Suction feed: 1.3 - 1.4 - 1.5 - 1.7 - 1.8 - 1.9 - 2.2

## SLIM KOMBAT HVLP

ITEM ID	COMPOSITION	PACKAGING
8130**	Cup POM C 680 cc + Air inlet pressure regulator with pressure gauge	■
8130**UV	Cup POM C-UV 680 cc + Air inlet pressure regulator with pressure gauge	■
8135**	Cup aluminum 750 cc + Air inlet pressure regulator with pressure gauge	■
8170**	Bayonet suction cup 1000 cc + Air inlet pressure regulator with pressure gauge	■
8180**	SP - M 1/4" + Air inlet pressure regulator with pressure gauge	■
8180**-3/8	SP - M 3/8" + Air inlet pressure regulator with pressure gauge	■
8160**	Spray gun only /	■

Note:  
add nozzle Ø to ITEM ID (\*\*)

## Recommended use



BASE COAT  
PRIMER

## Packaging



# SLIM XLIGHT HALO

## FIELD OF APPLICATION: PRIMERS, BASE COAT, CLEAR COAT AND INDUSTRIAL PAINTING

The latest addition to the Slim family, Slim XLight combines the traditional reliability of this historic line with new solutions aimed at improving aesthetics, weight, cleanliness and, above all, performance.

The matt nickel plating, enriched by a unique laser cutting, offers a guarantee of sealing and durability, the new body, shaped and lightened, makes the spray gun more manageable.

The new nozzle, combined with the new air cap geometries, offer an unprecedented level of performance.

The HALO (High Atomization Low Overspray) version, thanks to all these features, becomes the ideal spray gun for all types of surfaces, including thick ones.

SLIM XLIGHT HALO is characterized by:

- lightness and easy handling,
- refined aesthetics and resistance to every type of solvent,
- excellent for all types of surfaces,
- can also be used for base and clear base.

**Walcom®**  
SPRAY GUN EVOLUTION

CE Ex II 2G X



MADE IN ITALY

## TECHNICAL DATA

Body: chemically nickered aluminum - matte finishing

Trigger: PA & fiber glass

Air cap: anodized aluminum

Aircap ring: PA & fiber glass

Nozzle: AISI 303 stainless steel

Needle-spring: stainless steel

Seal gaskets: self-lubricating PTFE (teflon)

Weight: 455 g

Operating air pressure: range 0.5 - 2.5 bar (7.2 - 36 psi) / recommended at 2 bar (29 psi)

Air consumption: 260 l/min at 2 bar / 9 cfm at 29 psi

Ø nozzle **Gravity feed**: 1.0 - 1.1 - 1.2 - 1.3 - 1.4 - 1.5 - 1.7 - 1.8 - 1.9 - 2.2 - 2.5

Ø nozzle **Suction feed**: 1.3 - 1.4 - 1.5 - 1.7 - 1.8 - 1.9 - 2.2

Ø nozzle **Pressure feed**: 1.0 - 1.1 - 1.2 - 1.3 - 1.4 - 1.5 - 1.7 - 1.8 - 1.9 / Ø nozzle **HD feed**: 1.3 - 1.5 - 1.7 - 1.9 - 2.2

## SLIM XLIGHT HALO

ITEM ID	COMPOSITION	PACKAGING	Recommended use
8230**	Cup POM C 680 cc + Air inlet pressure regulator with pressure gauge	■	
8235**	Cup aluminum 750 cc + Air inlet pressure regulator with pressure gauge	■	
8220**	Cup POM C 680 cc SR ( without air flow regulator)	■	
8225**	Cup aluminum 750 cc SR ( without air flow regulator)	■	
8270**	Bayonet suction cup 1000 cc + Air inlet pressure regulator with pressure gauge	■	<b>BASE COAT CLEAR COAT PRIMER</b>
8272**	Bayonet suction cup 1000 cc SR ( without air flow regulator)	■	*** <b>HD</b>
8280**	SP -M 1/4" + Air inlet pressure regulator with pressure gauge	■	*** <b>HD</b>
8280**-3/8	SP -M 3/8" + Air inlet pressure regulator with pressure gauge	■	
8281**	SP -M 1/4" SR ( without air flow regulator)	■	
8281**-3/8	SP -M 3/8" SR ( without air flow regulator)	■	
8240**	HD - Pressurised gravity cup POM C 680 cc Double spray gun air inlet pressure regulator and pressurised cup with pressure gauge	■ ***	

### Packaging



# SLIM XLIGHT HVLP

## FIELD OF APPLICATION: PRIMERS, BASE COAT, CLEAR COAT AND INDUSTRIAL PAINTING

The latest addition to the Slim family, Slim XLight combines the traditional reliability of this historic line with new solutions aimed at improving aesthetics, weight, cleanliness and, above all, performance.

The matt nickel plating, enriched by a unique laser cutting, offers a guarantee of sealing and durability, the new body, shaped and lightened, makes the spray gun easier to handle.

The new nozzle, combined with the new air cap geometries, offers an unprecedented level of performance.

The HVLP version, thanks to all these features, becomes the ideal spray gun for all types of surfaces, including thick ones.

SLIM XLIGHT HVLP is characterized by:

- lightness and easy handling,
- refined aesthetics and resistance to every type of solvent,
- excellent for all types of surfaces,
- can also be used for base.

**Walcom®**  
SPRAY GUN EVOLUTION

CE Ex II 2G X



MADE IN ITALY

## TECHNICAL DATA

Body: chemically nicked aluminum - matte finishing

Trigger: PA & fiber glass

Air cap: anodized aluminum

Aircap ring: PA & fiber glass

Nozzle: AISI 303 stainless steel

Needle-spring: stainless steel

Seal gaskets: self-lubricating PTFE (teflon)

Weight: 455 g

Operating air pressure: range 0.5 - 2.5 bar (7.2 - 36 psi) / HVLP at 2 bar (29 psi)

Air consumption: 295 l/min at 2 bar / 10 cfm at 29 psi

Ø nozzle Gravity feed: 1.0 - 1.1 - 1.2 - 1.3 - 1.4 - 1.5 - 1.7 - 1.8 - 1.9 - 2.2 - 2.5

Ø nozzle Suction feed: 1.3 - 1.4 - 1.5 - 1.7 - 1.8 - 1.9 - 2.2

Ø nozzle Pressure feed: 1.0 - 1.1 - 1.2 - 1.3 - 1.4 - 1.5 - 1.7 - 1.8 - 1.9

## SLIM XLIGHT HVLP

ITEM ID	COMPOSITION	PACKAGING	Recommended use
8330**	Cup POM C 680 cc + Air inlet pressure regulator with pressure gauge	■	
8335**	Cup aluminum 750 cc + Air inlet pressure regulator with pressure gauge	■	
8370**	Bayonet suction cup 1000 cc + Air inlet pressure regulator with pressure gauge	■	
8380**	SP - M 1/4" + Air inlet pressure regulator with pressure gauge	■	
8380** - 3/8	SP - M 3/8" + Air inlet pressure regulator with pressure gauge	■	BASE COAT PRIMER

Note:  
add nozzle Ø to ITEM ID (\*\*)

### Packaging



# SLIM HALO

## FIELD OF APPLICATION: PRIMERS, BASE COAT, CLEAR COAT AND INDUSTRIAL PAINTING

Tradition, reliability, compactness. For 25 years Slim has been synonymous with quality.

A spray gun that adapts to any type of paint, guaranteeing that result and performance that is required of a Walcom® spray gun, 100% Made in Italy.

The HALO (High Atomization Low Overspray) version, thanks to the high atomization cap, is suitable not only for any type of base, but also for opaque and clear base.

The SLIM HALO is characterized by:

- reliability and robustness,
- excellent level of product atomization,
- recommended for any type of base and clear base.

**Walcom®**  
SPRAY GUN EVOLUTION

CE Ex II 2G X



MADE IN ITALY

### TECHNICAL DATA

Body: chemical nickel-plated polished aluminum

Air cap: chemical nickel-plated brass

Nozzle: AISI 303 stainless steel

Needle-spring: stainless steel

Seal gaskets: self-lubricating PTFE (teflon)

Weight: 535 g

Operating air pressure: 0.5 - 2.5 bar (7.2 - 36 psi) / recommended at 2 bar (29 psi)

Air consumption: 255 l/min at 2 bar / 9 cfm at 29 psi

Ø nozzle **Gravity feed/ Suction feed**: 1.0 - 1.2 - 1.3 - 1.5 - 1.7 - 1.9 - 2.2 - 2.5

Ø nozzle **Pressure feed**: 1.0 - 1.2 - 1.3 - 1.5 - 1.7 - 1.9 - 2.2

Ø nozzle **HD feed**: 1.3 - 1.5 - 1.7 - 1.9 - 2.2

## SLIM HALO

ITEM ID	COMPOSITION	PACKAGING	Recommended use
10068**	Cup POM C 680 cc + Air inlet pressure regulator with pressure gauge	■	
10069**	Cup aluminum 750 cc + Air inlet pressure regulator with pressure gauge	■	
10083**	Cup POM C 680 cc SR ( without air flow regulator)	■	
10084**	Cup aluminum 750 cc SR ( without air flow regulator)	■	
10077**	Bayonet suction cup 1000 cc + Air inlet pressure regulator with pressure gauge	■	BASE COAT CLEAR COAT PRIMER
10088**	Bayonet suction cup 1000 cc SR ( without air flow regulator)	■	***  HD
10078**	SP - M 1/4" + Air inlet pressure regulator with pressure gauge	■	***  HD
10078**-3/8	SP - M 3/8" + Air inlet pressure regulator with pressure gauge	■	
10089**	SP - M 1/4" SR ( without air flow regulator)	■	
10089**-3/8	SP - M 3/8" SR ( without air flow regulator)	■	
10080**	HD - Pressurised gravity cup POM C 680 cc Double spray gun air inlet pressure regulator and pressurised cup with pressure gauge	■ ***	

Note:  
add nozzle Ø to ITEM ID (\*\*)

# SLIM HVLP

## FIELD OF APPLICATION: PRIMERS, BASE COAT, CLEAR COAT AND INDUSTRIAL PAINTING

Tradition, reliability, compactness. For 25 years Slim has been synonymous with quality.

A spray gun that adapts to any type of paint, guaranteeing that result and performance that is required of a Walcom® spray gun, 100% Made in Italy.

The HVLP version, thanks to the high atomization cap, is suitable not only for any type of base, but also for opaque base.

The SLIM HVLP is characterized by:

- reliability and robustness,
- excellent level of product atomization,
- recommended for any type of base, matte base.

**Walcom®**  
SPRAY GUN EVOLUTION

CE Ex II 2G X



MADE IN ITALY

### TECHNICAL DATA

Body: chemical nickel-plated polished aluminum

Air cap: chemical nickel-plated brass

Nozzle: AISI 303 stainless steel

Needle-spring: stainless steel

Seal gaskets: self-lubricating PTFE (teflon)

Weight: 535 g

Operating air pressure: 0.5 - 2.5 bar / HVLP at 2 bar / 7.2 - 36 psi / HVLP at 29 psi

Air consumption: 280 l/min at 2 bar / 10 cfm at 29 psi

Ø nozzle Gravity feed: 1.3 - 1.5 - 1.7 - 1.9 - 2.2

Ø nozzle Suction feed: 1.7 - 1.9 - 2.2

Ø nozzle Pressure feed: 1.0 - 1.3 - 1.5 - 1.7 - 1.9 - 2.2

## SLIM HVLP

ITEM ID	COMPOSITION	PACKAGING	Recommended use
10060**	Cup POM C 680 cc + Air inlet pressure regulator with pressure gauge	■	
10061**	Cup aluminum 750 cc + Air inlet pressure regulator with pressure gauge	■	
10070**	Bayonet suction cup 1000 cc + Air inlet pressure regulator with pressure gauge	■	
10071**	SP - M 1/4" + Air inlet pressure regulator with pressure gauge	■	
10071**-3/8	SP - M 3/8" + Air inlet pressure regulator with pressure gauge	■	BASE COAT PRIMER

Note:  
add nozzle Ø to ITEM ID (\*\*)

### Packaging



# GRAFO SYSTEM

## FOR SPOT REPAIR AND PROFESSIONAL DECOR

Everything needed for the graphics and decoration professional.

From the specific spray gun for retouching, to the professional spray gun for any type of drawing, to the complete kit with everything needed for extremely high quality and precision work.

The experience and tradition of Walcom® in the world of graphics, enclosed in high-quality products, with attention to the reliability and precision of the workmanship of every single micro component that makes up these decorative jewels.

**Walcom®**  
SPRAY GUN EVOLUTION

CE Ex II 2G X



MADE IN ITALY

ITEM ID DESCRIPTION

## GRAFO BAG

**39000/W** Kit for professional decorator packed in suitcase

Featuring:

1 spray gun GRAPHIQUE

1 spray gun EGO CARBONIO HVLP Ø 0.7 with POM C gravity cup capacity 75 cc

1 needle-nozzle-air cap kit Ø 1.0 HVLP

1 DECOR KIT

1 air hose Ø 4x6 1.5 m with fittings

Weight: 1.915 Kg

Plastic suitcase



Recommended use



## GRAPHIQUE

**39003/W** Professional double action spray gun designed for all graphic works and decoration

Body: nickel-plated brass

Nozzle: stainless steel

Needle-springs: stainless steel

Double cups - gravity cup in anodized aluminum capacity 4 cc; suction cup in glass capacity 20 cc

Featuring: fitting for hose Ø 4x6 - service spanner - support

Weight: 300 g

Operating air pressure: 0.5 - 3.5 bar / 7.2 - 50 psi

Air consumption: 10 - 25 l/min / 0.3 - 0.8 cfm



## DECOR KIT

**34500/W** Ideal for the simultaneous use of more than one product with the EGO CARBONIO HALO/HVLP spray gun.

Featuring:

5 glass cups capacity 20 cc;

adaptor for EGO CARBONIO HALO/HVLP to be screwed on the body

Weight: 210 g



 In order to clean your spray gun more rapidly, we suggest that you reserve a cup for the diluent

## IDEAL FOR WATERBORNE AND SOLVENT BASE, MS AND HS FOR INDUSTRIAL, WOODWORKING AND BODY SHOP

Innovative automatic spray gun for industrial painting.

With a new design, MATIK combines the high product atomization features with the needs typical of the automatic painting sector such as component durability and extreme maintenance ease.

In fact, MATIK combines highly atomizing caps, from the bodywork sector, with perfect needle interference on the nozzle which, with CNC machine processed body and components, guarantee efficiency, reliability and durability.

Available in the MATIK GEO versions, thus ecological with double atomization nozzle recommended for Car Refinish; MATIK HVLP, recommended for industrial and wood applications; MATIK HALO (High Atomization Low Overspray), the high transfer efficiency version with high atomization, ideal for any type of application.

MATIK is engineered for easy maintenance but at the same time to deliver the best available performance with micrometric paint flow adjustment, all the models are available with 3 or 4 controls (the difference is in the pneumatic return needle control).

**Walcom®**  
SPRAY GUN EVOLUTION

CE Ex II 2G X



MADE IN ITALY

### TECHNICAL DATA

Air and control inlets: with rotary quick couplings (M 1/4" double product inlet)

Body: extruded anodised aluminum

Air cap: nickel-plated brass

Nozzle: AISI 303 stainless steel

Needle-spring: stainless steel

Spring return needle closing

Seal gaskets: self-lubricating PTFE (teflon)

Fan and needle opening adjustments: micrometric and independent

Weight: 890 g Matik 3 version - 983 g Matik 4 version

Operating air pressure: 2 bar (29 psi)

Air consumption: 250 l/min / 8 cfm

Ø nozzle HALO/HVLP version: 0.8 - 1.0 - 1.2 - 1.4 - 1.7 Ø nozzle GEO version: 0.7 - 1.0 - 1.3 - 1.5 - 1.7



## MATIK

ITEM ID	DESCRIPTION	PACKAGING	Recommended use
3280** HALO	Matik HALO 3	■	
3285** HALO	Matik HALO 4 + Pneumatic return needle closing	■	
3270** HVLP	Matik HVLP 3	■	
3275** HVLP	Matik HVLP 4 + Pneumatic return needle closing	■	
3260** GEO	Matik GEO 3	■	<b>Packaging</b> ■
3265** GEO	Matik GEO 4 + Pneumatic return needle closing	■	

Note:  
add nozzle Ø to ITEM ID (\*\*)

# MAIN SPRAY GUN SPARE PARTS

Walcom® original spare parts for a correct product maintenance are essential to keep the proper tool performance.

ADC Kit (needle - nozzle - air cap), SPB Kit the spare part box with the most frequent parts, Kit seals and springs (rebuild kit) included in each packaging or available separate.

A wide range of cups for spraygun, gravity, suction available in different materials and versions.

The new anti UV POM black cup, ideal solution for latest generation paint with fast drying times.



## SPB SPARE PARTS BOX

All the main spare parts enclosed in a practical box, for safe and orderly maintenance.

## ADC KIT

Needle, nozzle and air cap, essential spare parts for correct operation of the spray gun, in convenient and safe plastic boxes.

## CUPS

Complete range of POM C, aluminum, pressurised, upper and lower cups.

## ANTI UV CUP

The use of a specific compound during the injection process, prevents UV rays to penetrate the cup and it represents the perfect solution for the new fast drying paint materials.

## PACKAGING

All our products are packed in cardboard box, plastic case or blister, with a bar code system and item id number.

Delicate spare parts are carefully packed to avoid any transport damages.

## ORIGINAL

We recommend using only original spare parts for a proper and efficient functionality of our products.

The usage of not original spare parts can create malfunctioning but also damage the product itself.

## COMPATIBILITY

Always replace with part specific for your model. If the thread is the same dimension, it could be not compatible with your product by default.

Not using the proper part may seriously compromise the performance of your product.

## The ADC KIT contains needle-nozzle-air cap for the following models:

### ADC KIT Genesi Carbonio 360 EVO/LIGHT - HALO

GENESI  
CARBONIO  
360  
EVO/LIGHT

ITEM ID	Ø	ITEM ID	Ø	ITEM ID	Ø
BASE		CLEAR		CLEAR-CMP	
W020010	1.0	/	/	/	/
W020011	1.1	W010011	1.1	W010011/CMP	1.1
W020012	1.2	W010012	1.2	W010012/CMP	1.2
W020013	1.3	W010013	1.3	W010013/CMP	1.3
W020014	1.4	W010014	1.4	W010014/CMP	1.4
W020017	1.7	W010017	1.7	W010017/CMP	1.7
W020019	1.9	W010019	1.9	W010019/CMP	1.9

### ADC KIT Genesi Carbonio 360 EVO/LIGHT HVLP

ITEM ID	Ø
W030011	1.1
W030012	1.2
W030013	1.3
W030014	1.4
W030015	1.5
W030017	1.7
W030019	1.9

### ADC KIT Genesi Carbonio 360 EVO/LIGHT GEO

ITEM ID	Ø
W040010	1.0
W040011	1.1
W040012	1.2
W040013	1.3
W040014	1.4
W040015	1.5
W040017	1.7
W040019	1.9

## AIR CAP RING-AIR CAP exclusively for Genesi Carbonio 360 EVO/LIGHT

### Genesi Carbonio 360 EVO/LIGHT - HALO

GENESI  
CARBONIO  
360  
EVO/LIGHT

ITEM ID	Ø	ITEM ID	Ø	ITEM ID	Ø
BASE		CLEAR		CLEAR-CMP	
W020510	1.0	/	/	/	/
W020511	1.1	W010511	1.1	W010511/CMP	1.1
W020512	1.2	W010512	1.2	W010512/CMP	1.2
W020513	1.3	W010513	1.3	W010513/CMP	1.3
W020514	1.4	W010514	1.4	W010514/CMP	1.4
W020517	1.7	W010517	1.7	W010517/CMP	1.7
W020519	1.9	W010519	1.9	W010519/CMP	1.9

### Genesi Carbonio 360 EVO/LIGHT HVLP

ITEM ID	Ø
W030511	1.1
W030512	1.2
W030513	1.3
W030514	1.4
W030515	1.5
W030517	1.7
W030519	1.9

### Genesi Carbonio 360 EVO/LIGHT GEO

ITEM ID	Ø
W040510	1.0
W040511	1.1
W040512	1.2
W040513	1.3
W040514	1.4
W040515	1.5
W040517	1.7
W040519	1.9



# SPARE PARTS

GENESI  
ALLUMINIO

## ADC KIT Genesi Alluminio - HALO

ITEM ID	Ø	ITEM ID	Ø
BASE		CLEAR	
W060010	1.0	W050010	1.0
W060011	1.1	W050011	1.1
W060012	1.2	W050012	1.2
W060013	1.3	W050013	1.3
W060014	1.4	W050014	1.4
W060017	1.7	W050017	1.7
W060019	1.9	W050019	1.9

## ADC KIT Genesi Alluminio HVLP

ITEM ID	Ø
W070011	1.1
W070012	1.2
W070013	1.3
W070014	1.4
W070015	1.5
W070017	1.7
W070019	1.9

## ADC KIT Genesi Alluminio GEO

ITEM ID	Ø
W080010	1.0
W080011	1.1
W080012	1.2
W080013	1.3
W080014	1.4
W080015	1.5
W080017	1.7
W080019	1.9

EGO  
CARBONIO

EGO

## ADC KIT Ego Carbonio

ITEM ID	Ø	ITEM ID	Ø
HALO		HVLP	
700005	0.5	710005	0.5
700007	0.7	710007	0.7
700010	1.0	710010	1.0
700012	1.2	710012	1.2
700014	1.4	710014	1.4

## ADC KIT Ego

ITEM ID	Ø	ITEM ID	Ø
HALO		HVLP	
410005	0.5	41370	0.5
410007	0.7	41371	0.7
410010	1.0	41372	1.0
410012	1.2	41373	1.2
410014	1.4	41374	1.4

SLIM  
KOMBAT

## ADC KIT Slim Kombat S-I-SP HALO/HALO SR

ITEM ID	Ø
800010	1.0*
800011	1.1*
800012	1.2*
800013	1.3
800014	1.4
800015	1.5
800017	1.7
800018	1.8
800019	1.9
800022	2.2
800025	2.5**

## ADC KIT Slim Kombat S-I-SP HVLP

ITEM ID	Ø
810010	1.0*
810011	1.1*
810012	1.2*
810013	1.3
810014	1.4
810015	1.5
810017	1.7
810018	1.8
810019	1.9
810022	2.2
810025	2.5**

\* Ø 1.0 - 1.1 - 1.2 NO version I

\*\* Ø 2.5 NO version I and SP

**Slim Kombat UV**

Ø available: Ø 1.1 - 1.2 - 1.3 - 1.4

SLIM  
XLIGHT

## ADC KIT Slim XLight S-I-SP-HD HALO/HALO SR

ITEM ID	Ø
820010	1.0*
820011	1.1*
820012	1.2*
820013	1.3
820014	1.4
820015	1.5
820017	1.7
820018	1.8
820019	1.9
820022	2.2**
820025	2.5***

## ADC KIT Slim XLight S-I-SP HVLP

ITEM ID	Ø
830010	1.0*
830011	1.1*
830012	1.2*
830013	1.3
830014	1.4
830015	1.5
830017	1.7
830018	1.8
830019	1.9
830022	2.2**
830025	2.5***

\* Ø 1.0 - 1.1 - 1.2 NO version I

\*\* Ø 2.2 NO version SP

\*\*\* Ø 2.5 NO version I and SP

Ø available: 1.3 - 1.5 - 1.7 - 1.9 - 2.2

# SPARE PARTS

SLIM

## ADC KIT Slim S-I-SP HALO/HALO SR Slim HD

ITEM ID	Ø
1135210	1.0*
1135212	1.2*
1135213	1.3
1135215	1.5
1135217	1.7
1135219	1.9
1135222	2.2
1135225	2.5**

## KIT ADC Slim S-I-SP HVLP

ITEM ID	Ø
1135010	1.0*
1135013	1.3**
1135015	1.5**
1135017	1.7
1135019	1.9
1135022	2.2

### Slim HALO

\* Ø 1.0 - 1.2 NO version HD

\*\* Ø 2.5 NO version SP and HD

### Slim HVLP

\* Ø 1.0 NO version S and I

\*\* Ø 1.3 - 1.5 NO version I

GENESI  
TOP LINE

## ADC KIT Genesi Top Line HALO

ITEM ID	Ø
956010	1.0
956012	1.2
956013	1.3
956014	1.4
956017	1.7
956019	1.9

## ADC KIT Genesi Top Line HVLP

ITEM ID	Ø
946010	1.0
946012	1.2
946013	1.3
946014	1.4
946017	1.7
946019	1.9

## ADC KIT Genesi Top Line GEO

ITEM ID	Ø
936010	1.0
936013	1.3
936015	1.5
936017	1.7
936019	1.9

AUTOMATIC  
SPRAY GUNS

## ADC KIT Matik HALO 3-4

ITEM ID	Ø
375508	0.8
375510	1.0
375512	1.2
375514	1.4
375517	1.7

## ADC KIT Matik HVLP 3-4

ITEM ID	Ø
375408	0.8
375410	1.0
375412	1.2
375414	1.4
375417	1.7

## ADC KIT Matik GEO 3-4

ITEM ID	Ø
375307	0.7
375310	1.0
375313	1.3
375315	1.5
375317	1.7

# SPARE PARTS

## SPB - SPARE PARTS BOX

Plastic packaging containing the parts most subject to wear in the spray gun; 16 spare parts that assist the user's work. Reference, n°pieces and position in spare parts diagram are indicated in the box with a numbered grid that guides the professional searching for the required spare part.

ITEM ID	DESCRIPTION
90198	Spare parts box GENESI CARBONO EVO
90185	Spare parts box GENESI CARBONO LIGHT
90199	Spare parts box GENESI ALLUMINIO
90141	Spare parts box GENESI TOP LINE
90189/HALO	Spare parts box SLIM KOMBAT / SLIM XLIGHT HALO
90189/HVLP	Spare parts box SLIM KOMBAT / SLIM XLIGHT HVLP
90139	Spare parts box SLIM
90195	Spare parts box EGO CARBONIO
90143	Spare parts box EGO

Size: L 24 x P 18 x H 3.5 cm

Weight: 480 g Genesi Carbonio Evo-Light/ Genesi Top Line - 460 g Genesi Alluminio - 437 g Slim Kombat/Slim XLight/ Slim - 378 g Ego/ Ego Carbonio



## SET OF GASKETS

Set of gaskets includes: springs, rod, air valve for spray guns.

ITEM ID	DESCRIPTION
40782	GENESI CARBONO set of gaskets
40784	GENESI CARBONO LIGHT/EVO set of gaskets
1011270	GENESI TOP LINE set of gaskets
40783/HALO	SLIM KOMBAT / SLIM XLIGHT HALO set of gaskets
40783/HVLP	SLIM KOMBAT / SLIM XLIGHT HVLP set of gaskets
40761	SLIM set of gaskets
40824	EGO CARBONIO HALO/HVLP set of gaskets
1011262	EGO set of gaskets
40816	MATIK set of gaskets



**N.B.**  
IMAGE NOT  
REPRESENTATIVE

## ADAPTOR

Made of nickel-plated brass to fit the new 680 cc POM C cup for Genesi (ITEM ID 52028/B - 52028/F - 52028/UV) with spray guns Slim - Slim XLight.

ITEM ID	DESCRIPTION
52018	Adaptor



# SPARE PARTS

## GRAVITY CUPS

ITEM ID DESCRIPTION

### POM C 680 cc

**52028/B** 680 cc POM C gravity cup - Weight: 170 g

Ø 9 product passage hole - M 16x1.5 thread

Valid for models:

**GENESI CARBONIO EVO/LIGHT - GENESI ALLUMINIO - GENESI TOP LINE - SLIM KOMBAT**



### NYLON 680 cc

**52028/F** Nylon clear smoke effect cup 680 cc - Weight 147 g

Ø 9 product passage hole - M 16x1.5 thread

Valid for models:

**GENESI CARBONIO EVO/LIGHT - GENESI ALLUMINIO - GENESI TOP LINE - SLIM KOMBAT**



### POM C 680 cc UV

**52028/UV** POM C plastic grey cup anti UV 680 cc - Weight 170 g

Ø 9 product passage hole - M 16x1.5 thread

Valid for models:

**GENESI CARBONIO EVO/LIGHT - GENESI ALLUMINIO - GENESI TOP LINE - SLIM KOMBAT**



### POM C 680 cc

**52010/W** 680 cc POM C gravity cup - Weight: 170 g

**52010/UV** POM C plastic grey cup anti UV 680 cc - Weight 170 g

Ø 6.8 product passage hole - M 12x1 thread

Valid for models:

**SLIM XLIGHT - SLIM - EGO CARBONIO - EGO**



### POM C 75 - 180 cc

**52015/W** 75 cc POM C gravity cup - Weight: 50 g

**52014/W** 180 cc POM C gravity cup - Weight: 100 g

**52014/UV** POM C plastic grey cup anti UV 180 cc - Weight 100 g

Valid for models:

**EGO CARBONIO - EGO - SLIM XLIGHT - SLIM**



### UV KIT

Specific kit for using Walcom® spray guns with UV products, consisting of:

- 680 cc POM C cup with dark gray UV-shielded finish;

- UV-shielded black PVC air cap protection to avoid catalysis of product residue in the passage duct.

**52070** Valid for **SLIM KOMBAT** model

**52071** Valid for **GENESI CARBONIO EVO / LIGHT - GENESI ALLUMINIO** model

**52072** Valid for **EGO CARBONIO** model

**52073** Valid for **SLIM / SLIM XLIGHT** model



# SPARE PARTS

## GRAVITY CUPS

ITEM ID DESCRIPTION

### ALUMINIUM 750 cc

**52008/W** 750 cc aluminum gravity cup - Weight: 158 g

---

Valid for models:

**GENESI CARBONIO EVO/LIGHT - GENESI ALLUMINIO - GENESI TOP LINE - SLIM KOMBAT**



### ALUMINIUM 750 cc

**52005/W** 750 cc aluminum gravity cup - Weight: 158 g

---

Valid for models:

**SLIM XLIGHT - SLIM - EGO CARBONIO - EGO**



### ALUMINIUM 500 cc

**52007/W** 500 cc aluminum gravity cup - Weight: 116 g

---

Valid for models:

**SLIM XLIGHT - SLIM - EGO CARBONIO - EGO**



### ALUMINIUM 125 cc

**52016/W** 125 cc aluminum gravity cup - Weight: 65 g

---

Valid for models:

**EGO CARBONIO - EGO - SLIM XLIGHT - SLIM**



### CUPS mod. GRAPHIQUE

**52039** 20 cc glass suction cup - Weight 30 g

---

**51040/W** 4 cc anodized aluminum gravity cup - Weight 10 g



# SPARE PARTS

## SUCTION CUP- CAMLOCK AND BAYONER CUPS FOR SUCTION SPRAY GUNS

ITEM ID      DESCRIPTION

### CAMLOCK 1000 CC

**51008/W**      1000 cc complete anodized aluminum suction cup with cover - Weight: 428 g

**20100102083**      1000 cc anodized aluminum suction cup only - Weight: 225 g

**90119/W**      Set of camlock cup gaskets (5 pieces)

Valid for models:

**GENESI TOP LINE**



### CAMLOCK 1000 CC

**51012/W**      1000 cc complete anodized aluminum suction cup with cover - Weight: 450 g

**20100102083**      1000 cc anodized aluminum suction cup only - weight: 225 g

**90119/W**      Set of camlock cup gaskets (5 pieces)

Valid for models:

**SLIM KOMBAT - SLIM XLIGHT- SLIM**



### BAYONET 1000 CC

**51007**      1000 cc complete anodized aluminum suction cup with cover - Weight: 357 g

**20100568083**      1000 cc anodized aluminum suction cup only - Weight: 155 g

**90120/W**      Set of bayonet cup gaskets (5 pieces)

Valid for models:

**SLIM KOMBAT - SLIM XLIGHT- SLIM**



## PRESSURIZED GRAVITY CUP- FOR HIGH-DENSITY PRODUCTS

ITEM ID      DESCRIPTION

### PRESSURIZED GRAVITY CUP

**52055/W**      680 cc POM C gravity cup set complete with air flow regulator with gauge.  
For high density products like: latex, polyurethanes, gel coat,  
thixotropic products etc. - Weight 560 g

Valid for models:

**GENESI CARBONIO - GENESI TOP LINE - SLIM KOMBAT - GENESI ALLUMINIO**



### PRESSURIZED GRAVITY CUP

**52054/W**      680 cc POM C gravity cup set complete with air flow regulator with gauge.  
For high density products like: latex, polyurethanes, gel coat,  
thixotropic products etc. - Weight 560 g

**52053/W**      750 cc aluminum cup version - Weight: 580 g

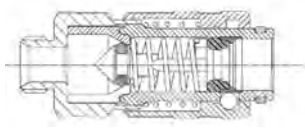
Valid for models: **SLIM XLIGHT - SLIM**



# COUPLINGS AND PLUGS

COMPATIBLE PLUGS

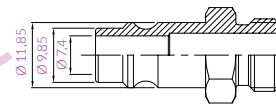
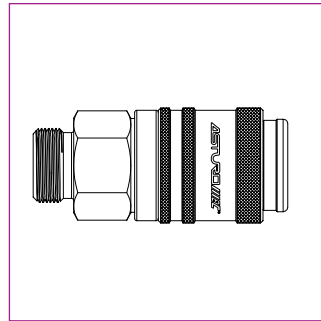
STANDARD



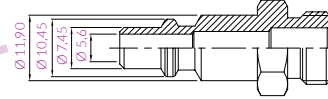
**X300 U**

## X300 U universal automatic coupling

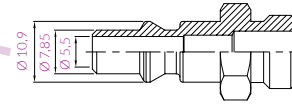
Body: nickel-plated brass/  
aluminum  
Tip: PA66 loaded glass with  
aluminum ring  
Air valve: brass  
Lock: 6-ball steel  
Gaskets: NBR



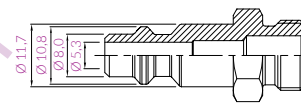
**D**



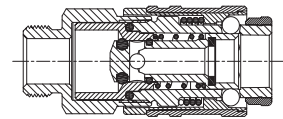
**I**



**S**



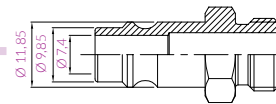
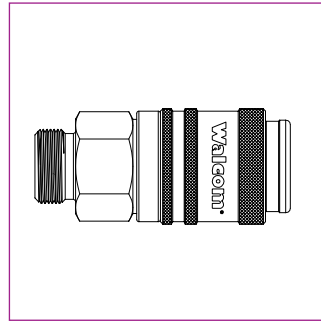
**USA**



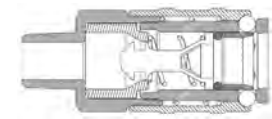
**X300**

## X300 automatic coupling

Body: nickel-plated brass/  
anodised aluminum  
Tip: PA66 loaded glass with alumi-  
num ring  
Air valve: brass  
Lock: 6-ball steel  
Gaskets: NBR



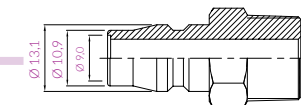
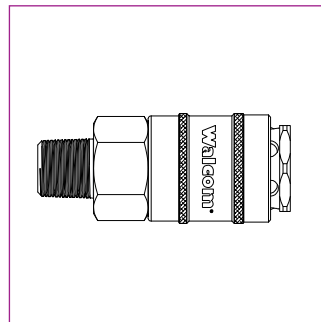
**D**



**X400**

## X400 semi-automatic coupling

Body: nickel-plated brass/  
tempered and chrome-plated steel  
Tip: nickel-plated brass  
Air valve: tropicalized steel  
Lock: 4-ball steel  
Gaskets: NBR



**Jp**

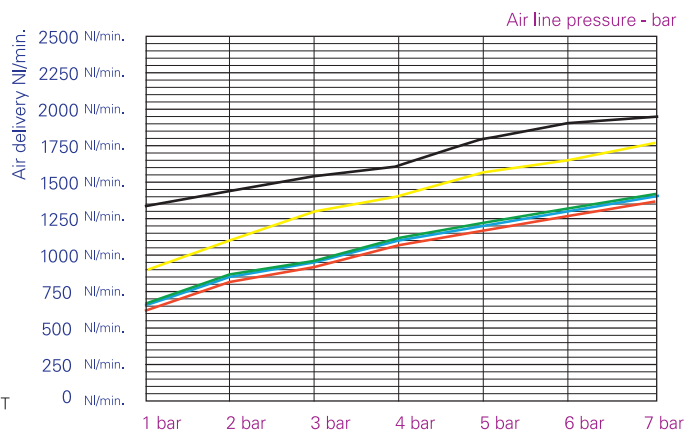
### TECHNICAL SPECIFICATIONS:

Professional coupling and plugs and high air flow fittings for body shop use. Japanese (diam. 9.0 mm) and German (diam. 7.4 mm) standards guarantee constant air flow between hose and spray gun, without choking, and air flow over 1.500 l/min at 6 bar / 52 cfm at 87 psi.

Operating air pressure: 0 - 16 bar / 0 - 232 psi  
Working temperature: -40°C + 80°C

- Standard D
- Standard I
- Standard S
- Standard USA
- Standard X400 AUT

### QUICK COUPLING FLOW DIAGRAM WITH 1 bar / 14 psi



# COUPLINGS AND PLUGS

## X300 U

ITEM ID      DESCRIPTION

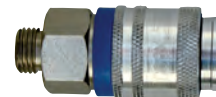
### X300 U - MALE

10201U      Thread 1/4"

10202U      Thread 3/8"

10203U      Thread 1/2"

Packaging: 25 pcs



### X300 U - FEMALE

10211U      Thread 1/4"

10212U      Thread 3/8"

10213U      Thread 1/2"

Packaging: 25 pcs



### X300 U - WITH REST

10221U      Internal diameter 6 mm

10222U      Internal diameter 8 mm

10223U      Internal diameter 10 mm

Packaging: 25 pcs



### X300 U - FOR RUBBER HOSE

10231U      Internal diameter 6 mm - External diameter 14 mm

10232U      Internal diameter 8 mm - External diameter 17 mm

10233U      Internal diameter 10 mm - External diameter 19 mm

10234U      Internal diameter 8 mm - External diameter 14 mm

Packaging: 25 pcs



### X300 U - FOR NYLON HOSE WITH SPRING

10241U      Internal diameter hose 6 mm - external diameter 8 mm

10242U      Internal diameter hose 8 mm - external diameter 10 mm

10243U      Internal diameter hose 6 mm - external diameter 10 mm

10244U      Internal diameter hose 8 mm - external diameter 12 mm

10246U      Internal diameter hose 10 mm - external diameter 12 mm

Packaging: 25 pcs





# COUPLINGS AND PLUGS

## X300

ITEM ID      DESCRIPTION

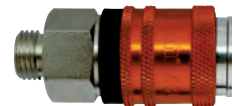
### X300 - MALE

10251      Thread 1/4"

10252      Thread 3/8"

10253      Thread 1/2"

Packaging: 10 pz.



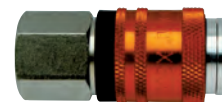
### X300 - FEMALE

10261      Thread 1/4"

10262      Thread 3/8"

10263      Thread 1/2"

Packaging: 10 pz.



### X300 - WITH REST

10271      Internal diameter 6 mm

10272      Internal diameter 8 mm

10273      Internal diameter 10 mm

Packaging: 10 pz.



### X300 - D MALE PLUG

11041      Thread 1/4"

11042      Thread 3/8"

11043      Thread 1/2"

Packaging: 25 pcs



### X300 - D FEMALE PLUG

11141      Thread 1/4"

11142      Thread 3/8"

Packaging: 25 pcs



# COUPLINGS AND PLUGS

## X400

ITEM ID	DESCRIPTION
---------	-------------

### X400 - MALE

10551	Thread 1/4" U
-------	---------------

10552	Thread 3/8" U
-------	---------------



Packaging: 10 pcs

### X400 - FEMALE

10651	Thread 1/4" U
-------	---------------

10652	Thread 3/8" U
-------	---------------



Packaging: 10 pcs

### X400 - WITH REST

10555	Internal diameter 8 mm
-------	------------------------

10556	Internal diameter 10 mm
-------	-------------------------



Packaging: 10 pcs

### X400 - JP MALE PLUG

11470	Thread 1/4"U
-------	--------------

11471	Thread 3/8"U
-------	--------------



Packaging: 10 pcs

### X400 - JP FEMALE PLUG

11480	Thread 1/4"U
-------	--------------

11481	Thread 3/8"U
-------	--------------



Packaging: 10 pcs

# PRESSURE REGULATORS FOR SPRAY GUNS

Professional pressure regulators for precise painting.

From the innovative membrane system, which absorbs compressed air line pressure fluctuation, very light carbon regulators with detachable digital pressure gauge (EJS system - easy joint system) with rotating or swivel connection, to traditional aluminum regulators with analog gauges.

A complete range for any type of requirement and need.



**Walcom®**  
SPRAY GUN EVOLUTION

MADE IN ITALY

## DGT PRO REGULATOR

DGT PRO carbon fiber regulator, swivel connection and digital pressure gauge with EJS system.

## MEMBRANE REGULATOR

Membrane regulator, ideal for equalizing the inlet pressure in the case of any changes in the air line.

Maximum guarantee for quality painting. EJS system for quick attachment and release of the digital pressure gauge.

## DIGITAL GAUGE

Digital pressure gauge with EJS system.

Settable in psi, bar, Kg/cm<sup>2</sup>, kPa according to the needs.

## PACKAGING

All our accessories are packed in safe box, plastic bag with hook system, configure to be easily stocked on shelves or grid stand.

High quality accessories line Made in Italy

## PRESSURE REGULATORS

ITEM ID DESCRIPTION

### MR-DGT MEMBRANE REGULATOR

**90187/W** Professional pressure regulator with internal membrane, capable of compensating for drops in line pressure up to 1 bar (14 psi), keeping the pressure constant spray gun inlet. Equipped with digital carbon fiber pressure gauge with EJS system.

**90188/W** Version without pressure gauge \*\*

Body: in POM with membrane in EPDM and internal spring in stainless steel.

Knob for pressure regulation equipped with safety lock.

Gauge: high precision digital with carbon fiber case

Scale: 0 - 10 bar / 0 - 145 psi

Air inlet: 1/4" U swivel, compatible with various standard 1/4"

EJS system (easy joint system) with automatic tap, for practical release and connection of the pressure gauge.

Packaging: 1 pc.

Weight: 175 g/ \*\*135 g



# PRESSURE REGULATORS

## PRESSURE REGULATORS

ITEM ID DESCRIPTION

### CARBON PRESSURE REGULATOR

**90193/W DGT PRO** - High flow and precision pressure regulator, with carbon fiber structure and 1/4 swivel connection, digital pressure gauge with carbon fiber case.  
Gauge: high precision digital with carbon fiber case  
EJS system (easy joint system) with automatic tap, for practical release and connection of the pressure gauge.



**90194/W PRO** - High flow and precision pressure regulator, with carbon fiber structure and 1/4 swivel connection.  
Compatible with EJS (easy joint system).

Body: carbon fiber  
Scale: 0 - 10 bar / 0 - 145 psi ( DGT PRO)  
Air inlet: 1/4 "U swivel, compatible with various standard 1/4"  
Packaging: 1 pc.  
Weight: 118 g - 77 g



### CARBON PRESSURE REGULATOR / ADJUSTABLE ANGLE

**90190/W DGT PRO** - High flow and precision pressure regulator, with carbon fiber structure and 1/4 swivel connection and adjustable angle 30°, digital pressure gauge with carbon fiber case.  
Gauge: high precision digital with carbon fiber case  
EJS system (easy joint system) with automatic tap, for practical release and connection of the pressure gauge.



**90192/W PRO** - High flow and precision pressure regulator, with carbon fiber structure and 1/4 swivel connection and adjustable angle 30°.  
Compatible with EJS (easy joint system).

Body: carbon fiber  
Scale: 0 - 10 bar / 0 - 145 psi ( DGT PRO)  
Air inlet: 1/4 "U swivel adjustable 30° angle connection, compatible with various standard 1/4"  
Packaging: 1 pc.  
Weight: 127 g - 86 g



### DIGITAL CARBON FIBER GAUGE - DGT

**90181/W** Digital gauge high precision, carbon fiber housing.

Scale: 0 - 10 bar / 0 - 145 psi  
EJS system (easy joint system) with automatic tap, for practical release and connection of the pressure gauge.  
Packaging: 1 pc.  
Weight: 41 g



# PRESSURE REGULATORS

## PRESSURE REGULATORS

ITEM ID DESCRIPTION

### AL REGULATOR

**90197/W** Direct flow air flow regulator in anodized aluminum and glass pressure gauge with metal case, to be applied to the air inlet of the spray gun.  
Pressure gauge: diameter 40 mm - scale 0-10 bar / 0-145 psi

Air inlet: 1/4 "U swivel, compatible with various standard 1/4"  
Packaging: 1 pc.  
Weight: 142 g



### REGULATOR

**90105/W** Air flow regulator with glass pressure gauge and metallic case to be applied to the spray gun air inlet.  
Pressure gauge: scale 0 -10 bar / 0 - 145 psi  
Air inlet: 1/4 "U swivel, compatible with various standard 1/4"



**90106/W** Air flow regulator to be applied to the spray gun air inlet.

Air inlet: 1/4 "U swivel, compatible with various standard 1/4"  
Packaging: 1 pc.  
Weight: 138 g - 68 g



### GAUGE

**61306** Spare gauge for air flow regulator, connection M 1/8".

Operating air pressure: 0 - 10 bar / 0 - 145 psi  
Packaging: 1 pc.  
Weight: 70 g



### GAUGE PROTECTOR

**90128** Gauge protector from 39 to 43 mm

**90129** Gauge protector da 63 mm

Transparent shockproof and paint-proof pressure gauge guard, washable with solvent.  
Packaging: 10 pc.  
Weight: 10 g



# PAINTING MASKS

Health care represents an essential aspect for Walcom®. Which is why we have developed a professional line of painting masks of the highest quality level, combined with practicality of use and comfort.

Evo 360 mask the innovative battery-powered painting mask from Walcom®.

It does not require connection to the compressed air line, making the operator completely free to move inside the spray booth.

The sophisticated and professional air filtration system, based on three different filtering levels (pre-filter-master filter for dust and various impurities-activated carbon filter for impurity residues) purifies the air making it 100% breathable.

The remarkable battery life and charging speed make use efficient by the operator who, thanks to the large anti-glare visor, can operate precisely and effectively.

Helmet - Safety the Walcom® mask line also includes the traditional complete mask, equipped with an activated carbon filter and connected to the compressed air line (Helmet) and the practical Safety line for quick applications, always in complete safety from a respiratory point of view.

**Walcom®**  
SPRAY GUN EVOLUTION



MADE IN ITALY

## FILTERS

The effectiveness of the masks is based on changing the filters and maintaining the masks.

Failure to replace filters or cartridges is equivalent to not wearing a mask, with the risk of seriously compromising the patient's respiratory system. painter. We therefore recommend that you respect the instructions on how often to replace the filters.

## ITEM ID DESCRIPTION

### EVO 360 MASK

**50423/W** Approved protection mask CE+ATEX approved

Purified air thanks to 3 internal filters

3 speed levels

Long-lasting battery (18 hours of battery life)

Speed 1 = 18 h duration, speed 2 = 15 h duration, speed 3 = 12 h duration

Fast charging 80% in 30 minutes

Large anti-glare visor with 90° opening lock system

Equipment: 10 visor protection films + 25 pre-filters + master filter + activated carbon filter

Leather belt

Packaging: 1 pc.

Weight: 2.3 Kg



### 6 MONTH FILTER PACKAGE

**50434/W** 6 month filter package

150 prefilters - 6 master filters - 3 activated carbon filters

**1 - PREFILTER** to be replaced daily

**2 - MASTER FILTER** to be replaced every month

**3 - ACTIVATED CARBON FILTER** to be replaced every 2 months

Packaging: 1 pc. - Weight: 2.2 Kg

### INDIVIDUAL SPARE PARTS

**50428/W** **1 - PREFILTER** to be replaced daily

**50426/W** **2 - MASTER FILTER** to be replaced every month \*

**50427/W** **3 - ACTIVATED CARBON FILTER** to be replaced every 2 months \*\*

**1** = Packs of 50 pcs. - Weight: 85 g,

**2/3** = Packs of 1 pc. = 92 g, 477 g

**32** - MASKS



# PAINING MASKS

## MASKS

ITEM ID DESCRIPTION

### HELMET

**50400/W** Approved protective mask CE0194 approved - EN1459N:2005 class A standard compliant

Visored helmet with internal ventilation  
Pressure drop safety buzzer  
Polyurethane hose for spray gun connections  
Filtering kit with carbon filters  
Belt  
2 spare adhesive visor cover  
Packaging: 1 pcs - Weight: 1.2 Kg



### SAFETY PLUS

**50410/W** Protective mask with 2 active carbon filters

**50411/W** Spare filter for ITEM ID 50410/W - weight 100 g

Meet EEC standards, 89/686/EEC directive  
Packaging: 1 pcs  
Weight: 320 g



### SAFETY

**50416/W** Protective mask with 1 active carbon filter

**50417/W** Spare filter for ITEM ID 50416/W - weight 100 g

Meet EEC standards, 89/686/EEC directive  
Packaging: 1 pcs  
Weight: 280 g



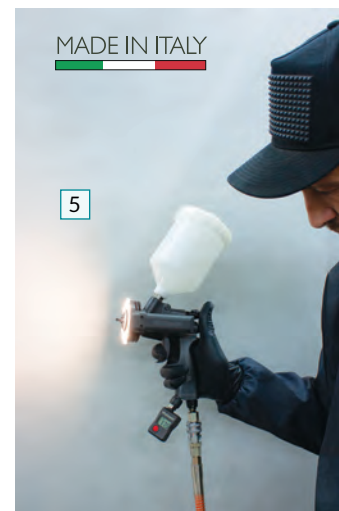
# PAINING ACCESSORIES

Professional accessories designed to facilitate work in the body shop and guarantee work in complete safety for the operator and a result of absolute quality. From the new painting overalls, designed and manufactured to guarantee maximum comfort and maximum practicality, to the range of filters, sieves and viscometers for suitable paint preparation.

The spray gun supports then offer the operator the possibility of arranging the spray guns in an orderly manner, both in the cabin and in the paint box, being able to choose between different types of magnetic and non-magnetic supports.

360 MAG HOLDER, the latest addition, also offers the possibility of attaching not only the spray gun but also the painting hose, thus avoiding leaving it on the booth grate. Finally 360 TRUE LIGHT, the innovative painting light that also becomes a solar check for color control.

Unique in its kind thanks to the intensity characteristics that can be modulated based on the colours, the opaque and interchangeable smoke protection glass, the Led crown of 36 lights which makes the light beam homogeneous and free of shadows and reflections, the universality thanks to the 5 adapters for the main spray guns on the market, battery life and charging speed. Made of anodized aluminum and carbon fibre, 360 TRUE LIGHT represents a truly professional tool to assist the operator during the painting and color control phase.



## 1 - SUIT

Made of nylon and carbon filaments for better breathability. Treatment antistatic and possibility of having separate jacket and trousers, for more practical management of clothing in the spray booth.

## 2 - VISCOSIMETER

Indispensable in hostaform to check density, commonly called the "Ford 4 cup" by workers.

## 3 - SUPPORTER

Valid supports for 1 or 2 spray guns with upper cup, booth wall mountable with a supplied magnet or screws (Supporter), and bench top (Skeleton).

## 4 - 360 MAG HOLDER

Practical magnetic holder for spray gun and for painting hose. Unique in its kind thanks to the attachment system on the trigger and not on the cup and thanks to the possibility of attaching the painting hose effectively and safely.

## 5 - 360 TRUE LIGHT

Practical and innovative painting light that also becomes a solar check for color match. Universal, thanks to the 5 adapters supplied, adjustable, light and balanced light intensity.

## PAPER SIEVE

Practical, efficient, disposable sieve for correct paint filtering.

## PACKAGING

All our accessories are packed in safe box, plastic bag with hook system, configure to be easily stocked on shelves or grid stand.

High quality accessories line Made in Italy

## ITEM ID DESCRIPTION

### PAINING CLOTHING

**ARC183/\*\*** 1- COMPLETE JACKET + TROUSERS  
High quality for the spray booth. Antistatic, breathable and elasticized. In black nylon reinforced with carbon filaments.

**ARC184/\*\*** 2- JACKET only

**ARC185/\*\*** 3- only PANTS

**ARC041/\*\*** 4- SUIT  
made for use in the spray booth in breathable white nylon and antistatic. Single pocket.

Sizes: \*\*add size (S - M - L - XL - XXL) to the ITEM ID - (pants only M - L - XL)

White jumpsuit (\*\*52 - 54 - 56)

Packaging: 2 pcs. COMPLETE - 1 pc. only JACKET / only TROUSERS

Weight: 155 g / 90 g / 65 g





# PAINTING ACCESSORIES

## ACCESSORIES

ITEM ID DESCRIPTION

### 360 TRUE LIGHT

**60172** Painting light with protective and interchangeable opaque lens (patented system). True light for color matte check.

Adjustable light intensity  
5 universal adapters for hat ring  
Carbon fiber shell, anodized aluminum ring  
Rechargeable battery with duration of 2.5 hours at maximum intensity, 14 hours maximum total duration  
Dimensions: 10.5 x 8.5 x 8.5 cm - Packaging: 1 pc. - Weight: 157g

#### 1 - KIT FOR 360 TRUE LIGHT

**90240** Kit of 10 protective and matte LENSES designed to safeguard the crown LEDs and to eliminate annoying light reflections during the painting phase.

#### 2 - RUBBER ADAPTERS for different types of spray gun

**3-piece kit** - Consult the table to find the adapter for your spray gun. Check here → 

#### 3 - PAINT REMOVER

**90261** Propylene Glycol spray solution with a specific formula, suitable for removing painting fumes from the protective lenses of the True Light, and for creating a protective base to prevent subsequent deposits. It does not contain solvents or VOCs. 200 ml spray can.



### 360 MAG HOLDER

**60171** Universal magnetic holder for any type of spray gun, with hook for painting hose support.

Characteristics:  
Robust and elastic (PCTG)  
Solvent resistant  
Dimensions cm: L 17 x D 7.5 x H 12.5 cm  
Packaging: 1 pc.  
Weight: 109g



### SUPPORTER

**60130** Magnetic holder for spray guns with gravity cups. Can also be affixed to non-ferrous surfaces using supplied screws.

Features:  
Painted steel  
Dimensions cm: L 20 x P 14.5 x H 23.2 cm  
Packaging: 1 pcs  
Weight: 1.68 Kg



### SKELETON

**60149/W** Holder for spray guns with gravity cups. Simple, stable and ergonomic, suited for any spray gun.

Features:  
Galvanised steel  
Dimensions cm: L 13 x P 20 x H 29 cm  
Packaging: 1 pcs  
Weight: 177 g



### CLEANING KIT

**90109/W** Cleaning set indispensable for spray gun maintenance.

Composition:  
1 pin;  
1 big cleaning brush;  
1 small cleaning brush;  
Packaging: 1 Kit  
Weight: 30 g



# PAINTING ACCESSORIES

## ACCESSORIES

ITEM ID DESCRIPTION

### ARTICULATED FITTING

**11048** F 1/4"nickel-plated brass fitting with 30° joint, ideal for painting.  
Jp standard Japanese version \*

**11049** F 1/4"nickel-plated brass fitting with 30° joint, ideal for painting.  
D standard German version \*\*

Packaging: 10 pcs  
Weight: \*680 g - \*\* 640 g



### FILTER

**90111/W** Steam trap filter with filler component and steam release valve to be fitted at the inlet of the spray gun.

Packaging: 1 pcs  
Weight: 100 g



### FILTER

**60097/W** 100-mesh (750 µm) complete filter for pressure fed spray guns,  
F/M 3/8" version\*

**60098/W** 100-mesh (750 µm) complete filter for pressure fed spray guns,  
F/M 1/4" version \*

**412012/W** 100-mesh (750 µm) complete filter for ITEM ID 60097/W \*\*

\* Packaging: 1 pcs = weight: 50 g - \*\* Packaging: 1 pcs = weight: 25 g



### FILTER

**90112/W** 2000-mesh (160 µm) stainless steel paint filter to be attached to the suction hose of spray guns with suction cups.

Packaging: 10 pcs  
Weight: 50 g



### FILTER

**90113/W** Nylon paint filter to be attached to the suction hose of spray guns with suction cups.

\*\* Specify: 5000 - 7000 - 10000 mesh (90 µm-75 µm-60 µm)

Packaging: 10 pcs  
Weight: 65 g



# PAINTING ACCESSORIES

## ACCESSORIES

ITEM ID DESCRIPTION

### SLIM / SLIM XLIGHT FILTER

**90114/W** 2000-mesh (160 µm) nylon paint filter to be attached to the spray gun with gravity cups for touch-ups.

**90137/W** 500-mesh (300 µm) nylon paint filter to be attached to the spray gun with gravity cups for primers.

Packaging: 10 pcs  
Weight: 40 g



### GENESI CARBONIO 360 EVO-LIGHT / GENESI ALLUMINIO / GENESI TOP LINE / SLIM KOMBAT FILTER

**90145/W** 800-mesh (230 µm) nylon paint filter to be attached to the spray guns with gravity cups.

Packaging: 10 pcs  
Weight: 40 g



### SIEVE

**90115\*\*/W** Nylon sieve for paint

Specify: 2000 - 5000 - 7000 - 10000 - 15000 - 17000 mesh  
(160 µm-90 µm-75 µm- 60 µm-45 µm-40 µm)

Packaging: 10 pcs  
Weight: 300 g



### PAPER SIEVE

**90146.10** Disposable paper paint sieve - 1000 mesh version (190 µm)

**90146.25** Disposable paper paint sieve - 2500 mesh version (125 µm)

Packaging: 250 pcs  
Weight: 1.473 Kg



### VISCOSIMETER

**90116/W** "FORD 4" viscosimeter cup to test paint density.

Packaging: 3 pcs  
Weight: 270 g



# PAINTING HOSES

Professional range of hoses specific to paint booths, also available in the practical 10/12 metre coupled versions.

In addition to the high performance Polyurethane and flexible Ragno, already popular and appreciated on the market, a new Walcom® SUPERFLEX hose is introduced with high performance in terms of sturdiness, durability, seal, temperature resistance and flexibility: ideal for safe painting in the spray booth.

## HOSES

ITEM ID DESCRIPTION

### SUPERFLEX

**60307** High performance and resistance hose, PU (Polyurethane) composite and thermoplastic rubber, reinforced with polyester. Antistatic. **100 m coil**  
Internal diameter 10 mm - external diameter 15 mm

Substrate and cover: PU composite and thermoplastic rubber  
Reinforcing: polyester fiber  
Operating air pressure: 15 - 20 bar / 217 - 290 psi  
Exploding pressure: 60 bar / 870 psi  
Temperature: - 15°C + 70°C  
Packaging: 1 pcs



### SUPERFLEX WITH FITTINGS

**60309** High performance and resistance hose, PU (Polyurethane) composite and thermoplastic rubber, reinforced with polyester. Antistatic. **12 m coil**  
Internal diameter 10 mm - external diameter 15 mm

Substrate and cover: PU composite and thermoplastic rubber  
Reinforcing: polyester fiber  
Operating air pressure: 15 - 20 bar / 217 - 290 psi  
Exploding pressure: 60 bar / 870 psi  
Temperature: - 15°C + 70°C  
Packaging: 1 pcs



### STRAIGHT POLYURETHANE

**60200** **100 m coil**  
Internal diameter 6 mm - external diameter 10 mm

**60201** **100 m coil**  
Internal diameter 8 mm - external diameter 12 mm

**60202** **100 m coil**  
Internal diameter 10 mm - external diameter 14.5 mm

Substrate and cover: 100% polyurethane  
Reinforcement: 550/1100 Trevira Heochst polyester yarn  
Operating air pressure: 20 bar / 290 psi  
Exploding pressure: 60 bar / 870 psi  
Temperature: - 25°C + 60°C  
Packaging: 1 pcs



# PAINTING HOSES

## HOSES

ITEM ID DESCRIPTION

### STRAIGHT POLYURETHANE WITH FITTINGS

**60210** 10 m coil with 2 swiveling female 1/4" fittings  
Internal diameter 6 mm - external diameter 10 mm

**60211** 10 m coil with 2 swiveling female 1/4" fittings  
Internal diameter 8 mm - external diameter 12 mm

**60212** 10 m coil with 2 swiveling female 1/4" fittings  
Internal diameter 10 mm - external diameter 14.5 mm

Substrate and cover: 100% polyurethane

Reinforcement: 550/1100 Trevira Hoechst polyester yarn

Operating air pressure: 20 bar / 290 psi

Exploding pressure: 60 bar / 870 psi

Temperature: - 25°C + 60°C

Packaging: 1 pcs



### STRAIGHT POLYURETHANE WITH FITTINGS

**60220** 25 m coil with 2 swiveling female 1/4" fittings.  
Internal diameter 6 mm - external diameter 10 mm

**60221** 25 m coil with 2 swiveling female 1/4" fittings.  
Internal diameter 8 mm - external diameter 12 mm

**60222** 25 m coil with 2 swiveling female 1/4" fittings.  
Internal diameter 10 mm - external diameter 14.5 mm

Substrate and cover: 100% polyurethane

Reinforcement: 550/1100 Trevira Hoechst polyester yarn

Operating air pressure: 20 bar / 290 psi

Exploding pressure: 60 bar / 870 psi

Temperature: - 25°C + 60°C

Packaging: 1 pcs



### RAGNO HOSE

**60250** 50 m coil  
Internal diameter 10 mm - external diameter 15 mm

**60254** 50 m coil  
Internal diameter 8 mm - external diameter 12 mm

Substrate and cover: polyurethane anti-abrasive and thermoplastic rubber

Reinforcement: polyester yarn

Operating air pressure: 20 bar / 290 psi

Exploding pressure: 60 bar / 870 psi

Temperature: - 20°C + 60°C

Packaging: 1 pcs



### RAGNO HOSE WITH FITTINGS

**60252** 10 m coil with fittings  
Internal diameter 10 mm - external diameter 15 mm

Substrate and cover: polyurethane anti-abrasive and thermoplastic rubber

Reinforcement: polyester yarn

Operating air pressure: 20 bar / 290 psi

Exploding pressure: 60 bar / 870 psi

Temperature: - 20°C + 60°C

Packaging: 1 pcs



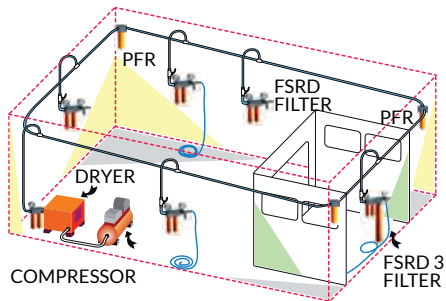
# FILTER SERIES

Walcom® series filter groups represent the maximum expression of quality in terms of compressed air treatment in body shop.

Line, drop line, spray booth: perfectly clean and filtered air is a must, and for this reason Walcom® has created a complete range of single and combined filter groups, able to fully eliminate all water, oil, dust and humidity residue from mains air, generating breathable air thanks to the active carbon filter.

The new /11 series combines a restyled look with higher efficiency which, thanks to the new air passage designs, guarantees 1200 l/min / 42 cfm air flow, allowing for efficient body shop with even 2 spray guns, not simultaneously.

## EXAMPLE OF THE AIR PIPING IN THE BODY SHOP



Piping inclination 0.5 - 1% max

**Walcom®**  
SPRAY GUN EVOLUTION



MADE IN ITALY

### 1 - PAIR PASSAGES

3/4" air passages with 1200 l/min (42 cfm) capacity.

Possibility of working with 2 spray guns not at the same time.

### 2 - BAR

CNC processed extruded and anodised aluminum bar and hoses.

### 3 - PRESSURE REGULATIONS

High precision pressure regulator with pressure gauge.

### 4 - SATURATION INDICATORS

Silica gel saturation indicators (FSRD 4 - FSRD 3 - ESR versions).

### 5 - DISCHARGE

Automatic for water and manual for oil.

## ITEM ID DESCRIPTION

### FSRD 4

**60138/11** A modular filter system ideal for use in the spray booth.

#### Composition:

- 1) Pre-filtering element in synthetic fibre for the elimination of condensation. Automatic discharge.
- 2) Oil-separating filter for the elimination of residual pollutants. Manual drainage tap.
- 3) Silica dryer group to reduce residual humidity in the compressed air. Nr. 3 saturation indicator lights.
- 4) Active carbon filter to eliminate all impurities and obtain breathable air.

Max residue < 0.0003 mg/m<sup>3</sup>.

Central body: anodized aluminum

Pressure adjuster: membrane system and automatic decompression

Air inlet: F 3/4"; air outlet: n° 2 from M 1/4"

Filtering power: water filter 25 µm - oil 0.01 µm - carbons <0,0003 mg/m<sup>3</sup>.

Operating air pressure: 12 bar / 174 psi

Air consumption: 1200 l/min to 6 bar / 42 cfm at 87 psi

Weight: 11 Kg

#### Recommended use



# FILTER SERIES

## FILTER

ITEM ID DESCRIPTION

### FSRD 3

**60123/11** A modular filter system ideal for use in the spray booth.

**Composition:**

- 1) Pre-filtering element in synthetic fibre for the elimination of condensation. Automatic discharge.
- 2) Oil-separating filter for the elimination of residual pollutants. Manual drainage tap.
- 3) Silica dryer group to reduce residual humidity in the compressed air. Nr. 3 saturation indicator lights.
- 4) Filter to eliminate dust generated by silica, 5 µm filtering capacity.

Central body: anodized aluminum

Pressure adjuster: membrane system and automatic decompression

Air inlet: F 3/4"; air outlet: n° 2 from M 1/4"

Filtering power: water filter 25 µm - oil 0.01 µm - powders 5 µm

Operating air pressure: 12 bar / 174 psi

Air consumption: 1200 l/min to 6 bar / 42 cfm at 87 psi

Weight: 11 Kg

**Recommended use**



### FSRD 2

**60145/11** A modular filter system ideal for use in the spray booth.

**Composition:**

- 1) Pre-filtering element in synthetic fibre for the elimination of condensation. Automatic discharge.
- 2) Oil-separating filter for the elimination of residual pollutants. Manual drainage tap.
- 3) Active carbon filter to eliminate all impurities and obtain breathable air. Max residue < 0.0003 mg/m³.

Central body: anodized aluminum

Pressure adjuster: membrane system and automatic decompression

Air inlet: F 3/4"; air outlet: n° 2 from M 1/4"

Filtering power: water filter 25 µm - oil 0.01 µm - carbons <0,0003 mg/m³.

Operating air pressure: 12 bar / 174 psi

Air consumption: 1200 l/min to 6 bar / 42 cfm at 87 psi

Weight: 7 Kg

**Recommended use**



### FSRD

**60121/11** Air treatment system excellent for use in body shop and industry.

**Composition:**

- 1) Pre-filtering element in synthetic fibre for the elimination of condensation. Automatic discharge.
- 2) Oil-separating filter for the elimination of residual pollutants. Manual drainage tap.

Central body: anodized aluminum

Pressure adjuster: membrane system and automatic decompression

Air inlet: F 3/4"; air outlet: n° 2 from M 1/4"

Filtering power: water filter 25 µm - oil 0.01 µm

Operating air pressure: 12 bar / 174 psi

Air consumption: 1200 l/min to 6 bar / 42 cfm at 87 psi

Weight: 4.7 Kg

**Recommended use**



### FCA

**60139/11** Active carbon filter to eliminate all impurities and obtain breathable air, max oil residue < 0.0003 mg/m³.

Central body: anodized aluminum

Air inlet: F 3/4"; air outlet: F 3/4"

Operating air pressure: 12 bar / 174 psi

Air consumption: 1200 l/min to 6 bar / 42 cfm at 87 psi

Weight: 2 Kg

**Recommended use**



# FILTER SERIES

## FILTER

ITEM ID DESCRIPTION

### PFR

**60127/11** Filter unit for the elimination of condensation.

#### Composition:

1) Synthetic fibre pre-filtering element to eliminate condensation. Automatic drain.

Central body: anodized aluminum

Pressure adjuster: membrane system and automatic decompression

Air inlet: F 3/4"; air outlet: n° 2 from M 1/4"

Filtering power: water filter 25 µm

Operating air pressure: 12 bar / 174 psi

Air consumption: 1200 l/min to 6 bar / 42 cfm at 87 psi

Weight: 3.45 Kg

#### Recommended use



### ESR

**60129/11** Silica drying unit, to eliminate residual humidity in compressed air, to be used in combination with an air pre-filtering group in a spray booth.

#### Composition:

1) Filter to eliminate dust generated by silica 5 µm.

Central body: anodized aluminum

Pressure adjuster: membrane system and automatic decompression

Provided with an indicator to show saturation of the silica which can be replaced or regenerated (4 hours at 120° C).

Air inlet: F 3/4"; air outlet: n° 2 from M 1/4"

Filtering power: air 5 µm

Operating air pressure: 12 bar / 174 psi

Air consumption: 1200 l/min to 6 bar / 42 cfm at 87 psi

Weight: 11.5 Kg

#### Recommended use



### THK

**60134** The kit comes in a case for scheduled FSRD4 annual equipment maintenance

**60168** The kit comes in a case for scheduled FSRD3 annual equipment maintenance

#### Composition:

nr. 1 synthetic fibre water filter: to be replaced once a year;

nr. 1 coalescent oil filter: to be replaced once a year;

nr. 2 active carbon filters: to be replaced every 6 months ( only ITEM ID 60134);

nr. 1 - 1.3 kg silica gel packaging.

Weight: 2.28 Kg FSRD4 - Weight: 2.18 Kg FSRD3

#### Recommended use



## SPARE PARTS FOR AIR FILTRATION SYSTEM

**3064087** 1 - WATER FILTER synthetic fiber to eliminate condensation.  
Filtration capacity 25 micron

**3063162** 2 - OIL FILTER cartridge to eliminate oil impurities.  
Filtration capacity 0.01 micron

**3063096** 3 - SILICA GEL silica gel beans to remove any residual humidity  
(it can be regenerated in 4 h at 120°C, it can last maximum 1 year)

**3064003A** 4 - ACTIVE CHARCOAL this filter remove any residual impurities, gas or vapor.  
Max residual <0.00003mg/m³

All packs of 1 pc.

Weight: 1= 59 g 2= 79 g

3= 1,3 Kg 4= 8 g

#### Recommended use





# THERMODRY TECHNOLOGY - TD<sup>3</sup> PRO / TD<sup>1</sup> PRO

The new TD<sup>3</sup> PRO and TD<sup>1</sup> PRO multifunctional heat conditioner range is a unique and innovative compressed air conditioning system inside a spray booth that lets you work with heat regulated air and, for TD<sup>3</sup> PRO, without any solid and gaseous impurities.

The Thermodry Technology line, equipped with the new and more powerful THT hose and rich range of accessories, now represents the top in terms of efficiency and reliability in the paint phase, based on 3 main functions:

**1 - Air heating and thermoregulation:** the TD<sup>3</sup> PRO / TD<sup>1</sup> PRO heating element, combined with the THT heated hose and internal J thermocouple, heat and regulate air to allow the operator to paint at constant temperature, regardless of the climate/room conditions. Let's not forget that air used in painting can even drop (due to air expansion) under 5°C.

TD PRO can reach temperatures between 20 and 50°C during the paint phase, essential for water-based and UHS transparent paint application, and over 70°C for drying.

Temperature which, once quickly reached, are kept constant during the entire work phase.

**2 - Air filtering (TD<sup>3</sup> PRO only):** the full line of equipment filtering groups, water-oil-silica-active carbons, can achieve fully clean and breathable compressed air.

**3 - Automatic dehumidifying mass regeneration (TD<sup>3</sup> PRO only):** once saturated with humidity, Silica gel requires regeneration. The TD<sup>3</sup> PRO SRS system, due to the hot air flow inversion generated by the heating element, regenerates the entire humidifying mass in just 4 hours.

The new TD<sup>3</sup> and and TD<sup>1</sup> multifunctional heat conditioner "PRO" line responds to user's suggestions, significantly contributing to the development of this new TD series.

In fact, experience is the foundation of each product and its success, and what better advice can contribute to perfecting a tool than that from people who use it every day?

Walmec, always attentive to these market inputs, has translated all this into a new efficient TD "PRO" series, with the following improvements:

- the new Tech Pro software, able to efficiently control tool operations, offers the operator the possibility of working in full safety and efficiency;
- the air flow rate (over 1,200 l/min / 42 cfm) allows you to work in full efficiency even with two spray guns not at the same time;
- the new THT hose's heating power, 1.000 W, grants higher reactivity in reaching and maintaining set temperatures, with the consequent practically total reduction of operator wait time;
- the new automatic condensation drain system, for higher cleaning and tool maintenance security.

New and important features that further enhance this exceptional tool that has stood out as the most efficient and complete on the market.



MADE IN ITALY

## BENEFITS

Integral and efficient system use provides the following benefits:

- 1 saving up to 20% of paint material;
- 2 up to 40% drying time savings over traditional systems;
- 3 the possibility of lowering spray booth temperature by at least 5°C over that recommended by paint manufacturers;
- 4 better paint layout;
- 5 higher application speed;
- 6 elimination of brilliancy loss;
- 7 reduction of spot risks;
- 8 "orange peel" effect reduction;
- 9 full elimination of solid and gaseous impurities;
- 10 lowering of the dew point;
- 11 automatic and timed silica regeneration (TD<sup>3</sup> PRO);
- 12 constant compressed air and hose temperature to fully guarantee system efficiency.

### 1 - EFFICIENT SOFTWARE

The Tech Pro version efficiently manages TD operations, controlling any system faults.

### 2 - DOUBLED AIR FLOW

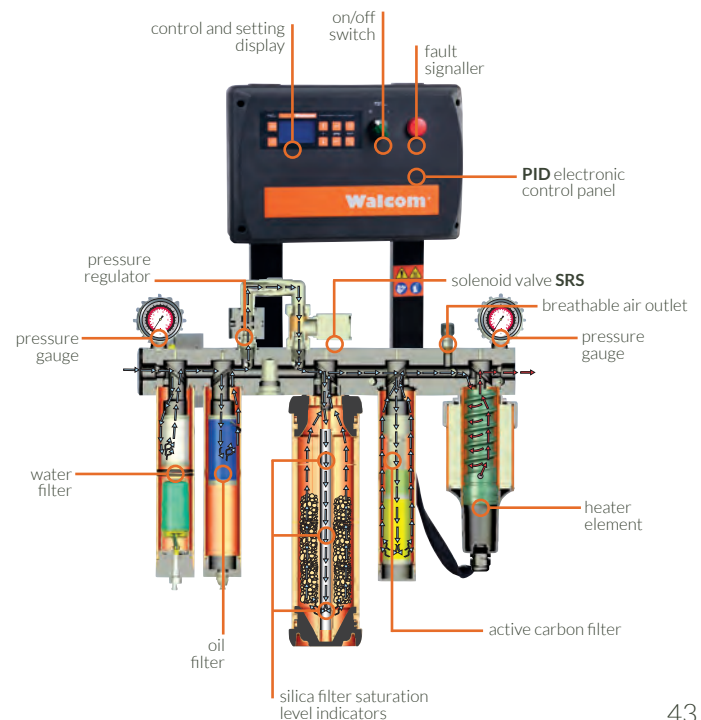
The air flow rate of 1200 l/min / 42 cfm allows you to work with 2 spray guns in full efficiency, not at the same time.

### 3 - DRAIN SYSTEM

Automatic for water with safety rod for any clogs, manual for oil.

### 4 - THT PRO

New high performance and efficient hose with 1000 W power.



## THERMODRY TECHNOLOGY

ITEM ID DESCRIPTION

### TD<sup>3</sup> PRO

**60151/T** Spray booth integrated air conditioning and thermoregulation system.

#### Composition:

1) Synthetic fibre pre-filtering element that eliminates condensation.  
Automatic drain with safety rod for manual drain. Replace every 12 months.  
2) De-greaser filter to eliminate residual pollutants. Manual drain. Replace every 12 months.  
3) Drying group with silica gel that reduces residual humidity in compressed air.  
Possibility of silica gel regeneration with TD<sup>3</sup> PRO hot air flow SRS valve. Silica gel lasts max 1 year.  
4) Active carbon filter to eliminate all impurities and obtain breathable air. Max oil residue < 0.0003 mg/m<sup>3</sup>.  
Replace every 6 months.  
5) Heating element with 1.000 W power controlled by an electronic unit with PID retroactive system and SCR heating power regulation.  
Central body: anodised aluminum  
Remote control with 3 preset and editable temperatures  
Pressure regulator: membrane regulation and automatic decompression  
Air inlet: F 3/4"; air outlet: F 3/4"  
Filtering power: water filter 25 µm - oil 0.01 µm - carbons <0,0003 mg/m<sup>3</sup>.  
Operating air pressure: 2 - 8 bar / 29 - 116 psi  
Air consumption: 1200 l/min to 6 bar / 42 cfm at 87 psi  
Weight: 21 Kg

#### Recommended use



### TD<sup>1</sup> PRO

**60152/T** Spray booth integrated thermoregulation system.

#### Composition:

1) Heating element with 1.000 W power controlled by an electronic unit with PID retroactive system and SCR heating power regulation.  
Central body: anodised aluminum  
Remote control with 3 preset and editable temperatures  
Air inlet: F 3/4"; air outlet: 3/4"  
Operating air pressure: 2 - 8 bar / 29 - 116 psi  
Air consumption: 1200 l/min to 6 bar / 42 cfm at 87 psi  
Weight: 6.7 Kg

#### Recommended use



**60161** **THT - 12 METERS** vulcanised, antistatic rubber heated air hose.

**60163** **THT - 17 METERS** vulcanised, antistatic rubber heated air hose.

**60162** **THT - 22 METERS** vulcanised, antistatic rubber heated air hose.

#### Recommended use



Power: 1.000 W

Thermoregulation: internal J thermocouple

Dimensions: 10x15 mm - Length: 12/17/22 m

Weight: 2.4/4/5 Kg

## THERMODRY TECHNOLOGY

ITEM ID DESCRIPTION

### THC

**3063303** Trolley

Painted steel rack structure, divided into two parts for easy assembly.  
Permits easy TD<sup>3</sup> PRO and TD<sup>1</sup> PRO transport and use.  
Weight: 5.2 Kg

Recommended use



### THK

**60134** The kit comes in a case for scheduled TD<sup>3</sup> PRO annual equipment maintenance.

**Composition:**

nr. 1 synthetic fibre water filter: to be replaced once a year;  
nr. 1 coalescent oil filter: to be replaced once a year;  
nr. 2 active carbon filters: to be replaced every 6 months;  
nr. 1 1.3 kg silica gel packaging.  
Weight: 2.28 Kg

Recommended use



### DOUBLE MEMBRANE REGULATOR

**3064374** Double membrane regulator, recommended for the simultaneous use of 2 THT hoses with TD<sup>3</sup> PRO and TD<sup>1</sup> PRO equipment.  
This regulator compensates for the imbalances in the air flow volumes, generated by the flow absorption of the 2 hoses, allowing the use of the entire air flow rate of the equipment and making the simultaneous use of two hoses 100% efficient THT.

Weight: 1,950 Kg  
Packaging: 1 pc.

Recommended use



### FAN JET THERMO

**60170** Air pressure gun to dry the base at 70° C. Insulating handle and with air regulator control.

Blowing distance:

- 30-40 cm in the first seconds;  
- 10-20 cm in the next stage.

Body: ergonomic in transparent insulating plastic

Nozzle: nylon and sunburst rubber

Air consumption: 450 l / min at 3 bar / 16 cfm at 43 psi

Weight: 280 g

Recommended use

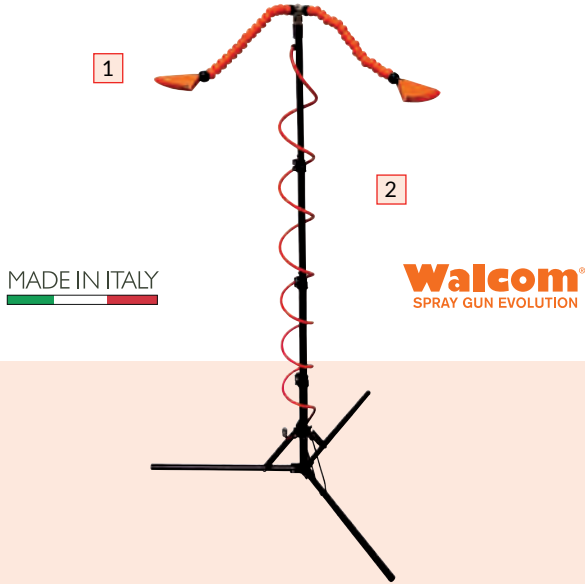


# FAN JET LINE

Specific line of products for drying bases. Lightweight, high-performance and ecological, they represent an innovative and high-performance system that can be summarized as follows:

- more effective; 40% reduction in drying time compared to traditional Venturi systems, thanks to the particular arc shape of the nozzle and the homogeneous flow of the air generated, which allows you to stand closer to the paint support;
- more efficient; 50% reduction in air consumption;
- more practical; 30% weight reduction and 15% noise reduction.

Fan Jet is available in manual version, manual with a practical magnetic coupling system, or in a comfortable and versatile support adjustable in height and inclination.



## 1 - FAN JET

Fan Jet with radial nozzle in nylon and thermoplastic rubber

## 2 - STRUCTURE

Stand structure adjustable in height and angle, with practical adjustable arms.

### ITEM ID DESCRIPTION

## FAN JET

**60150/BP** Gun for drying at 70° of the continuous flow base, equipped with an air regulator.

Blowing distance:

- 30-40 cm in the first stage;
- 10-20 cm in the final drying.

Body: metallic

Nozzle: nylon and rubber radial pattern

Air consumption: 900 l / min at 6 bar / 31 cfm at 87 psi

Weight: 140 g

### Recommended use



## FAN JET MAGNETIC

**60150/MAG** Gun for drying at 70°, continuous flow base, equipped with an air regulator.  
Version with magnet 18x18 mm for a practical and easy to attach to the cabin walls.

Blowing distance:

- 30-40 cm in the first stage;
- 10-20 cm in the final drying.

Body: metallic

Nozzle: nylon and rubber radial pattern

Air consumption: 900 l / min at 6 bar / 31 cfm at 87 psi

Weight: 150 g

### Recommended use



## FAN JET STAND

**60167** Support for 2 Fan Jet nozzles for the base withering at 70°.

Blowing distance:

- 30-40 cm in the first seconds;
- 10-20 cm in the next stage.

Structure: aluminum

Height: adjustable from 50 to 170 cm

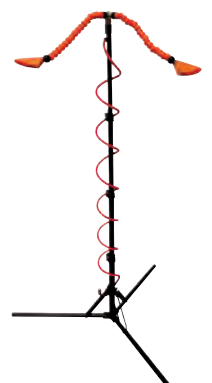
Tilt: adjustable from 0° to 360°

Nozzle: nylon and rubber sunburst

Air consumption: 980 l/min at 6 bar 42 cfm at 87 psi / 34 cfm at 87 psi

Weight: 4.5 Kg

### Recommended use



# ECODRY LINE

The Ecodry line includes the range of quick water-based paint drying guns and systems.

Ecodry, exploiting the Venturi system, can increase the emitted air volume by about 15 times, thus significantly reducing drying time.

The enormous generated volume of air, in fact, associated with heat taken from the spray booth (20% mains air, 80% recycled air), allows for the fast evaporation of water residue.

The range now also includes a LIGHT version made of insulating antistatic thermoplastic material for lightweight and heatproof work.

**IMPORTANT:** work with perfectly filtered air to avoid the infiltration of impurities that could compromise finish quality.

MADE IN ITALY



**Walcom®**  
SPRAY GUN EVOLUTION

## 1 - NUT

Air flow regulation nut

## 2 - BODY

Body fully made of nylon for lighter, more practical work.

## 3 - REGULATION

Air flow regulator for higher use precision.

### ITEM ID DESCRIPTION

## ECODRY

**60125** Aluminum blower gun to dry waterborne paint, adjustable flow-volume.

Blow distance:

40-50 cm from the surface, continuously moving the gun

Central body: anodised aluminum

Grip: nylon

Operating air pressure: 0.5-2 bar / 7.2 - 29 psi

Air consumption: 200-300 l/min / 7-10 cfm

Packaging: 1 pcs

Weight: 550 g

### Recommended use



## ECODRY LIGHT

**60143** Super light nylon blower to dry waterborne paint, adjustable flow-volume.

Blow distance:

40-50 cm from the surface, continuously moving the gun

Body: nylon

Operating air pressure: 0.5-2 bar / 7.2 - 29 psi

Air consumption: 200-300 l/min / 7-10 cfm

Packaging: 1 pcs

Weight: 390 g

### Recommended use



## ECODRY STAND

**60165** Aluminum support with 2 Ecodry light - D plug

**60165/JP** Aluminum support with 2 Ecodry light - JP plug

Ecodry stand dries any type of surface from 1 m distance.

Features: zinc steel structure, 4 anodized aluminum sustaining axis, adjustable.

Fittings: X 300 U- X400

Hose: poliurethane spirial hose

Packaging: 1 pcs

Maximum adjustment: L 160 x P 80 x H 250 cm

Weight: 9.1 Kg

### Recommended use



# SPRAY GUN CLEANER

The EASY series spray gun cleaners are used to manually clean spray guns and are the best and most convenient solution for those who want to create an area dedicated to spray gun cleaning.

Practical, essential and complete, the EASY gun cleaners are available in the /S versions for solvent paints and /W versions for water-based paints.

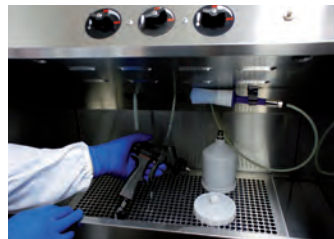
Spraygun cleaner EASY, it allows a proper cleaning and maintenance of your spraygun, really practical and safe, it helps to maintain your spraygun properly and ecofriendly.

The powerful thinner atomizer (water atomizer in the /W version), combines with proper operation, allow for the best results in spraygun clean and maintenance.



**Walcom**  
SPRAY GUN EVOLUTION

MADE IN ITALY



Always use protective gloves during cleaning

## 1 - EXHAUST HOOD

This guarantees the absence of solvent and other fumes, additionally protecting the operator's health.

## 2- FLOW CHANNELS

Ecological and efficient, they work with the Venturi and gravity systems.

## 3 - WORK SURFACE

Ample and secure, it provides for efficient and fast work.

## 4 - BLOW GUN

To assist the operator in the spray gun cleaning phases.

### ITEM ID DESCRIPTION

## EASY/S

**90061** Spray gun cleaner for solvent paints.

For more accurate spray gun cleaning in three phases:

- 1) atomized clean solvent flow
- 2) clean solvent flow
- 3) recycled solvent flow

Structure: zinc sheet

Dimension of washing tank: L 62 x P 36 x H 50 cm

Total dimensions cm: L 62 x P 36 x H 140 cm

Operating air pressure: 4.0-6.0 bar / 58 - 87 psi

Air consumption: 65 l/min / 2 cfm

Packaging: 1 pcs

Weight: 38 Kg

### Recommended use



## EASY/W

**90062** Spray gun cleaner suited for water-based paints.

For more accurate spray gun cleaning in three phases:

- 1) atomized clean water flow
- 2) clean water flow
- 3) recycled water flow

Structure: stainless steel

Cleaning tank: stainless steel

Dimension of washing tank: L 68 x P 43 x H 50 cm

Total dimensions cm: L 68 x P 43 x H 145 cm

PA/6 cleaning assistant blow gun

Operating air pressure: 4.0 - 6.0 bar / 58 - 87 psi

Air consumption: 65 l/min - 2 cfm

Packaging: 1 pcs

Weight: 43 Kg

### Recommended use



# COMPRESSED AIR GUNS

Complete range of compressed air guns for efficiency and long term professional use in the body shop. From standard air compressed guns to those for mono-component soundproofing protective compounds, all are manufactured with a MOPLen body and the components are produced in brass and stainless steel. The new adjustable nozzle of the IA/L - FG allows to obtain different spray thickness according to the surface to be treated.



**Walcom®**  
SPRAY GUN EVOLUTION

MADE IN ITALY

## 1 - NOZZLE

External mixing nozzle for event powder product distribution on the surface to be treated.

## 2 - CUP

Anodised aluminum cup for 1 l cans or cartridges with any thread.

## 3 - REGULATOR

Inlet air flow regulator to adjust the finish during work.

## 4 - SAFETY VALVE

Safety valve to permit the automatic release of any over-pressure.

## ITEM ID DESCRIPTION

### IM BODY

**50242/W** Protective soundproof application gun for under bodies, single components and protective waxes, equipped with a product flow regulator and inlet air flow regulator.

#### Nozzle:

1 short nozzle with fan

3 different types of atomising nozzles with 90 cm extensions

Cup: in anodized aluminum with internal thread cartridge holder and aluminum suction hose.

Operating air pressure: 5.0 - 8.0 bar / 72 - 118 psi

Packaging: 1 pcs

Weight: 2.1 Kg

#### Recommended use



### AS/FG

**40004/W** Professional blow gun with flow delivery valve.

Body: moplén

Nozzle: nickel-plated brass

Operating air pressure: 6.0 bar / 87 psi

Packaging: 1 pcs

Weight: 200 g

#### Recommended use



# COMPRESSED AIR GUNS

## COMPRESSED AIR GUNS

ITEM ID DESCRIPTION

### PC/NS-FG

**30038** Gun for applying adhesives, fillers and silicone in cartridges.

Body: moplen  
Cup: aluminum  
Operating air pressure: 2 - 2.5 bar / 29 - 36 psi  
Packaging: 1 pcs  
Cartridge: L 22.5 cm - diam. min Ø 40 - diam. max Ø 50  
Weight: 575 g

Recommended use



### IA/L - FG

**30022** Gun for applying monocomponent soundproofing protective compounds and protective wax polyurethane bases in 1 l tins - **Connector with European thread**

**30022USA** Gun for applying monocomponent soundproofing protective compounds and protective wax polyurethane bases in 1 l tins - **Connector with USA thread**

**30022AM** Gun for applying monocomponent soundproofing protective compounds and protective wax polyurethane bases in 1 l tins - **Connector with Southamerican thread**

Body: moplen  
Nozzle: adjustable spray  
Length of suction hose: 23 cm  
Operating air pressure: 2 - 2.5 bar / 29 - 36 psi  
Packaging: 1 pcs  
Weight: 260 g

Recommended use



### IA/BED LINER

**30054** Gun for the application of two-component (catalyzed) soundproofing protective products with disposable cup - adapter M 16 x 1.5 (Genesi Carbonio EVO/Light - Slim Kombat) **WITHOUT REGULATOR\*\***

**30055** Gun for the application of two-component (catalyzed) soundproofing protective products with disposable cup - adapter M 16 x 1.5 (Genesi Carbonio EVO/Light - Slim Kombat) **WITH REGULATOR\***

Body: moplen  
Equipment supplied: disposable PPS® type cup adapter  
Nozzle: adjustable spray  
Operating air pressure: 2 - 2.5 bar / 29 - 36 psi  
Packaging: 1 pcs  
\*Weight: 385 g - \*\*Weight: 240 g

Recommended use



### IA/LU - FG

**30023** Gun for applying monocomponent soundproofing protective compounds and protective wax polyurethane bases in pre-packed tins - **Connector with European thread**

**30023USA** Gun for applying monocomponent soundproofing protective compounds and protective wax polyurethane bases in pre-packed tins - **Connector with USA thread**

**30023AM** Gun for applying monocomponent soundproofing protective compounds and protective wax polyurethane bases in pre-packed tins - **Connector with Southamerican thread**

Corpo: moplen  
Featuring: 2 suction hoses (length of suction hose: 23 cm),  
1 hose with special nozzle for spraying inside parts  
(length extension hose: 60 cm)  
Nozzle: adjustable spray  
Operating air pressure: 2 - 2.5 bar / 29 - 36 psi  
Packaging: 1 pcs  
Weight: 300 g

Recommended use



### TS

**50244/W** Gun for applying single component soundproofing protective compounds including polyurethane based compounds and protective waxes in pre-packed 1 l tins - **Connector with European thread**

**50245/W** Gun for applying single component soundproofing protective compounds including polyurethane based compounds and protective waxes in pre-packed 1 l tins - **Connector with USA thread**

**50244AM/W** Gun for applying single component soundproofing protective compounds including polyurethane based compounds and protective waxes in pre-packed 1 l tins. - **Connector with Southamerican thread**

Body: polished and nickel-plated metal with soft-touch rubber overprinting  
Featuring: 60 cm long extension hose with special nozzle for spraying in box sections  
Operating air pressure: 2-2.5 bar / 29 - 36 psi  
Packaging: 1 pcs  
Weight: 540 g

Recommended use





## По вопросам продаж и поддержки обращайтесь:

Алматы (7273)495-231  
Ангарск (3955)60-70-56  
Архангельск (8182)63-90-72  
Астрахань (8512)99-46-04  
Барнаул (3852)73-04-60  
Белгород (4722)40-23-64  
Благовещенск (4162)22-76-07  
Брянск (4832)59-03-52  
Владивосток (423)249-28-31  
Владикавказ (8672)28-90-48  
Владимир (4922)49-43-18  
Волгоград (844)278-03-48  
Вологда (8172)26-4159  
Воронеж (473)204-51-73  
Екатеринбург (343)384-55-89  
Иваново (4932)77-34-06  
Ижевск (3412)26-03-58  
Иркутск (395)279-98-46  
Казань (843)206-01-48

Калининград (4012)72-03-81  
Калуга (4842)92-23-67  
Кемерово (3842)65-04-62  
Киров (8332)68-02-04  
Коломна (4966)23-41-49  
Кострома (4942)77-07-48  
Краснодар (861)203-40-90  
Красноярск (391)204-63-61  
Курск (4712)77-13-04  
Курган (3522)50-90-47  
Липецк (4742)52-20-81  
Магнитогорск (3519)55-03-13  
Москва (495)268-04-70  
Мурманск (8152)59-64-93  
Набережные Челны (8552)20-53-41  
Нижний Новгород (831)429-08-12  
Новокузнецк (3843)20-46-81  
Ноябрьск (3496)41-32-12  
Новосибирск (383)227-86-73

Омск (3812)21-46-40  
Орел (4862)44-53-42  
Оренбург (3532)37-68-04  
Пенза (8412)22-31-16  
Петрозаводск (8142)55-98-37  
Псков (8112)59-10-37  
Пермь (342)205-81-47  
Ростов-на-Дону (863)308-18-15  
Рязань (4912)46-61-64  
Самара (846)206-03-16  
Саранск (8342)22-96-24  
Санкт-Петербург (812)309-46-40  
Саратов (845)249-38-78  
Севастополь (8692)22-31-93  
Симферополь (3652)67-13-56  
Смоленск (4812)29-41-54  
Сочи (862)225-72-31  
Ставрополь (8652)20-65-13  
Сургут (3462)77-98-35

Сыктывкар (8212)25-95-17  
Тамбов (4752)50-40-97  
Тверь (4822)63-31-35  
Тольятти (8482)63-91-07  
Томск (3822)98-41-53  
Тула (4872)33-79-87  
Тюмень (3452)66-21-18  
Ульяновск (8422)24-23-59  
Улан-Удэ (3012)59-97-51  
Уфа (347)229-48-12  
Хабаровск (4212)92-98-04  
Чебоксары (8352)28-53-07  
Челябинск (351)202-03-61  
Череповец (8202)49-02-64  
Чита (3022)38-34-83  
Якутск (4112)23-90-97  
Ярославль (4852)69-52-93

Россия +7(495)268-04-70

Казахстан +7(7172)727-132

Киргизия +996(312)96-26-47

Адрес: <https://walmec.nt-rt.ru/> || эл. почта: [wce@nt-rt.ru](mailto:wce@nt-rt.ru)